



# Prospectus 2024-25



**Institute for Excellence in Higher Education (IEHE)  
Bhopal**

*A State Level Autonomous Institute of Higher Education, established by Govt. of M.P.*





**Award Ceremony of Best NSS Unit (2021-22) in the DARBAR Hall of the Rashtrapati Bhawan**



**Director and NSS Officer being felicitated for NSS National Award by Hon'ble President of India**



# **INSTITUTE FOR EXCELLENCE IN HIGHER EDUCATION BHOPAL (MP)**



## **PROSPECTUS**

### **2024-25**



**A State Level Autonomous Institute of Higher Education, Established  
by Govt. of Madhya Pradesh**



**Felicitation of Best NSS Unit (2021-22) in the in Raj Bhawan Hall**



**TIRANGA YATRA**



### **Chairman**

Hon'ble Minister of Higher Education, Government of M.P.

### **Vice Chairman**

Additional Chief Secretary/Principal Secretary

Department of Higher Education, Government of M.P.

### **Members**

- Principal Secretary/Secretary  
*Department of Finance, Govt. of M.P.*
- Principal Secretary/Secretary  
*Department of Sports and Youth Welfare, Govt. of M.P.*
- Principal Secretary/Secretary  
*Department of Schedule Caste Welfare, Govt. of M.P.*
- Principal Secretary/Secretary  
*Department of Backward Class Welfare, Govt. of M.P.*
- Principal Secretary/Secretary  
*Department of Planning, Economics & Statistics, Govt. of M.P.*
- Principal Secretary/Secretary  
*Department of Women and Child Welfare, Govt. of M.P.*
- Principal Secretary/Secretary  
*Department of Public Works, Govt. of M.P.*
- Commissioner  
*Directorate of Higher Education, Govt. of M.P.*

Three renowned academicians nominated by Higher Education  
Department, Govt. of M.P.

### **Member Secretary**

Director  
IEHE, Bhopal

# GENERAL COUNCIL



## *From the Director's Desk...*



### **Dear Prospective Students and Parents**

As Director of the Institute for Excellence in Higher Education (IEHE) Bhopal, I am delighted to extend a warm welcome to you through this prospectus to our esteemed institution."

We proudly announce that our Institute has been accredited by the National Assessment and Accreditation Council (NAAC) not just once, but four times, with consistently high grades. We have received an 'A' grade three times, showcasing our dedication to maintaining quality standards. Moreover, in our most recent assessment, we have achieved the prestigious A+ grade (CGPA 3.45) a testament to our unwavering commitment to excellence in higher education. This remarkable achievement reflects the relentless efforts of our faculty, staff, and students who strive for academic excellence and continuous improvement. The NSS unit of this institute was recently selected for the most prestigious National Award for its exemplary services and glaring achievements. Receiving this award from the Hon'ble President of India was one of the historic moments for us.

In alignment with the transformative vision outlined in the National Education Policy (NEP) 2020, IEHE is committed to redefining the landscape of higher education. NEP 2020 serves as our guiding compass, driving our efforts to innovate, adapt, and foster a learning environment that prepares students for the challenges and opportunities of the 21st century. As inheritors of a diverse and profound cultural heritage, we believe in integrating traditional wisdom, indigenous practices, and contemporary knowledge systems into our curriculum. Through initiatives such as the Localization of Curriculum Framework (LoCF), we endeavour to create a learning experience rooted in our cultural ethos while embracing global perspectives.

Moreover, NEP 2020 underscores the pivotal role of vocational training and skill development in nurturing a workforce that is both skilled and adaptable. At IEHE, we are committed to providing our students with hands-on training, industry-relevant skills, and experiential learning opportunities. Through our vocational training programs, students gain practical expertise and the confidence to thrive in diverse professional settings.

We firmly believe that education extends beyond the boundaries of textbooks and classrooms; it encompasses the development of intellect, character, and skills necessary to thrive in an ever-changing world. We offer a diverse range of co-curricular and extracurricular activities designed to complement the academic curriculum and provide students with opportunities for personal growth and self-discovery. Whether through sports, cultural events, community service projects, or leadership initiatives, students at IEHE are encouraged to explore their interests, develop their talents, and cultivate a well-rounded personality. Students of this institute are continuously clearing the most prestigious examinations like UPSC, CA, CS, IIT JAM, CLAT, etc, and are bringing laurels to our institute. We feel proud to share that our students have been securing high ranks in UPSC Civil Services Examinations for the last three years and being selected for the most prestigious services like IAS, IPS, IRS, etc. To mention a few here are Ms Gunjita Agrawal: AIR-26, Ms. Damini Diwakar: AIR-435 and Mr. Jay Barange: AIR-587 in UPSC-2022, Lipi Nagayach: AIR-140 in UPSC-2021, Mr. Shubham Agrawal: AIR-153 in UPSC-2020. As the latest achievement, our ex-student Mr. Ankesh Verma secured AIR-813 in UPSC-2023.

At IEHE, we are committed to providing a transformative educational experience that fosters academic excellence, personal growth, and professional development. Our institute stands as a beacon of quality education, where students are encouraged to explore their potential, cultivate critical thinking skills, and become lifelong learners equipped to tackle the challenges of the modern world.

As we embark on this journey of transformation and growth, we invite you to be a part of the IEHE community—dedicated to academic excellence, innovation, and holistic development. Together, let us reimagine the future of higher education, celebrate the richness of our Indian heritage, and empower individuals to realize their full potential as global citizens and change-makers.

**Dr. Pragyesh Kumar Agrawal**  
**Director**



Motto, Vision, Mission, and Objectives	3
Profile of the Institute	4
The Management and Legal Status	5
The Vision of New Education Policy 2020	6
Why IEHE?	7–8
Courses Offered	9
i) UG Courses	9–11
ii) PG Courses	12
iii) Vocational Courses	13–14
iv) Departmentwise Vocational Courses Proposed under NEP-2020	15
Admission Guidelines	16–25
Teaching Methodology	26
i) Objective Based Education (OBE)	26
ii) Indian Knowledge System (IKS)	26
iii) Information Communication Technology (ICT)	26
Compulsory Uniform and Identity Card	26–27
Discipline	27–28
Medium of Instruction	28
Institute Timings	28
Examination System/ Promotions	29–34
Facilities	34–36
Library	37
Hostel	37–38
Scholarships	38–39
Research	39–40
Student Support Services	40–43
Other Highlights	43
Academic Calendar	44
Fee Structure	45–56
Medals	57
हिन्दी परिचय	58–61
IEHE Family	62–63
NSS/ NCC	64–65
MoU	66
Sansthan Gaan, Madhya Pradesh Gaan, Rashtra Gaan (National Anthem)	68–70

# CONTENTS



## MOTTO

*‘विद्यया विन्दतेऽमृतम्’  
Learning Bestows the Nectar of Life.*

## VISION

*To accelerate quality and excellence in Higher Education at the global level.*

## Mission

- The Institute aims to serve as a hub for excellence in Higher Education, enabling students to compete with the outside world.
- It focuses on strengthening academic knowledge through innovative, interactive, and interdisciplinary approaches in learning and augmenting research, soft skills, and hands-on experience for employability across the globe.
- It intends to strive for the holistic development of students by imbibing cultural, ethical, and social values.
- It also emphasizes analytical activities through seminal strategies with emerging technologies and the latest infrastructure to create accessibility and equity for aspiring learners from demographically diverse backgrounds.

## Objectives

- To enhance academic excellence with potential strategies, myriad choices, hybrid learning, and multi-disciplinary and cognitive approaches.
- To enable the students to optimize their potential through a student-centric approach via live projects, presentations, seminars, co-curricular and extra-curricular activities.
- To nurture the innate talents of the students and to encourage creativity in their approach towards learning through Continuous Comprehensive Evaluation.
- To enhance skill development for optimum employability and better career prospects.
- To improve equity and accessibility in the attainment of Higher Education.
- To imbibe contemporary technologies and innovation to be equipollent with global standards.
- To create an awareness of social, environmental, and humanitarian issues.
- To cater to the needs of students for physical and mental health.
- To be a paragon in the examination system by accomplishing transparency and providing technical assistance.
- To be an exemplar of excellence worth being followed by the institutions engaged in Higher Education.





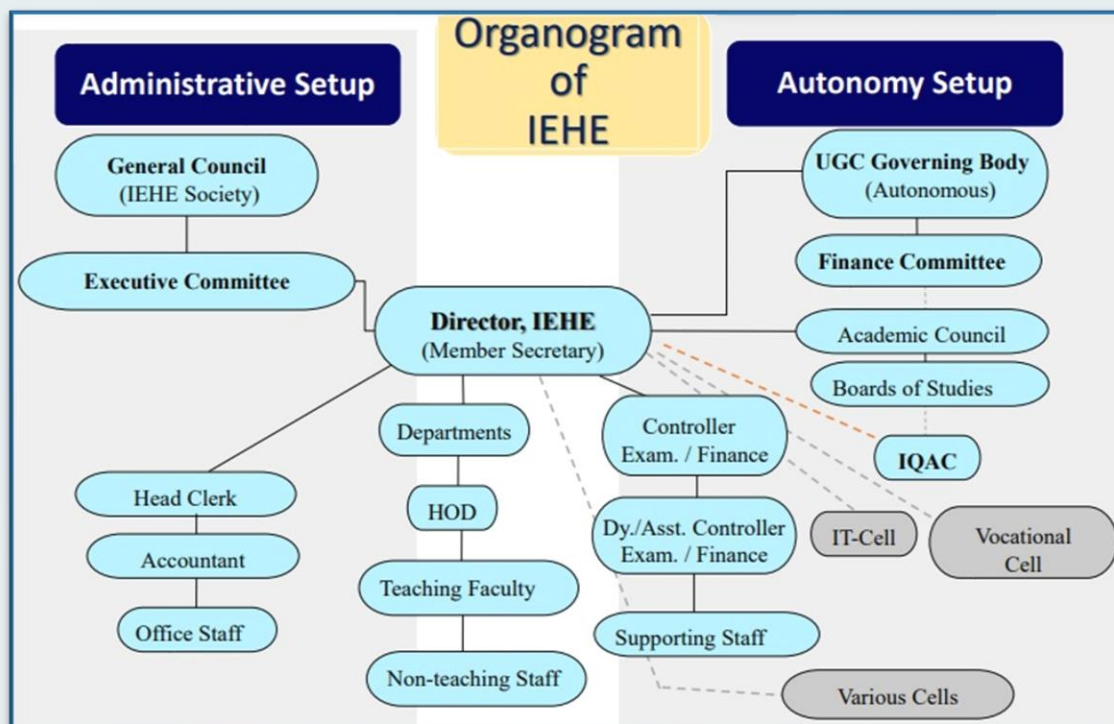
The Institute of Excellence in Higher Education (IEHE) is a premier institution located in the heart of Bhopal, Madhya Pradesh, dedicated to providing quality education and fostering holistic development among its students. Established in 1995 with a vision to excel in academia, research, and innovation, IEHE has consistently maintained high standards of education and has been recognized for its excellence by the National Assessment and Accreditation Council (NAAC) thrice with an 'A' grade followed recently by the coveted A+ grade (CGPA 3.45) in the fourth cycle of accreditation in 2023. Accredited four times by the National Assessment and Accreditation Council (NAAC) showcases unwavering commitment to quality education and continuous improvement.

IEHE offers a wide range of undergraduate and postgraduate programs across disciplines such as Arts, Science, Commerce, Bachelor of Business Administration, and Bachelor of Physical Education. The institution's curriculum is designed to foster critical thinking, creativity, and practical skills relevant to the current industry demands.

The institute boasts a distinguished faculty comprising experienced academicians, researchers, and industry experts committed to nurturing students' intellectual growth and academic excellence. Faculty members actively engage in research and scholarly activities, contributing to advancing knowledge in their respective fields. IEHE provides state-of-the-art infrastructure and modern facilities conducive to learning and research. The campus features well-equipped laboratories, libraries stocked with a vast collection of books and digital resources, advanced computing facilities, and dedicated spaces for co-curricular and extracurricular activities. The institute prioritizes the holistic development of its students and offers a range of support services to ensure their success. This includes career counselling, placement assistance, mentorship programs, leadership development initiatives, and opportunities for participation in cultural, sports, and community service activities. Driven by a commitment to excellence, innovation, and societal impact, IEHE continues to strive towards new milestones in higher education.

The Institute aims to further enhance its academic offerings, research capabilities, and outreach initiatives, making significant contributions to the advancement of knowledge and the betterment of society.

# PROFILE



## The Management and Legal Status

The Institute is autonomous and is managed by '*The Institute for Excellence in Higher Education Society*', Bhopal, registered under the 'Society Registration Act 1973' and was recognized by the UGC in July 2002 under 2(f) & 12(B), of the UGC Act 1956. The policies are laid down by the General Council headed by the Hon'ble Minister for Higher Education, and the Executive Body headed by the Additional Chief Secretary/ Principal Secretary, Government of M.P., Higher Education Department.

IEHE has been granted autonomy by the University, under the provision of section 6(16) of the Madhya Pradesh Vishwavidyalaya Adhiniyam, 1973. The Institute has been enjoying continuously the autonomy granted by UGC since January 2007 to date. Making judicious use of this autonomy, the Institute designs and routinely updates its syllabi to meet the standards of the best national and international universities. It also constantly evolves and upgrades the teaching, evaluation, and examination methodologies.

The Director is the administrative head of the Institute and all academic matters are decided and implemented by various bodies constituted as per the Memorandum of '*The Institute for Excellence in Higher Education Society, Bhopal*' in coordination with the heads of departments and faculty members, ensures the smooth functioning and management of academic and administrative matters.



## **The Vision of National Education Policy-2020**

### **Introduction**

The National Education Policy (NEP) of India, approved by the Union Cabinet on July 29, 2020, is a comprehensive framework to reform the education system in the country. It aims to address the challenges facing the existing education system and envision a holistic, multidisciplinary, and equitable education system that prepares students for the demands of the 21st century.

### **The Vision of the Policy**

The NEP 2020 aims to transform the education landscape of India by promoting creativity, critical thinking, and problem-solving skills among students. It emphasizes the need for a learner-centric approach and seeks to make education more inclusive, flexible, and relevant to the needs of the 21st century.

It is expected to transform India into a global powerhouse, and that is possible only through education of unparalleled standards. The Policy, with its reforms to the curriculum and pedagogy of our institutions, endeavors to develop a deeper sense of regard towards the Fundamental Duties and Constitutional Values as well as a deepening the bond with one's country and growing conscious awareness of one's roles and responsibilities in ever-evolving environments. Policy envisions a future for India and all its learners where there is not only an immense, deep-rooted pride in being Indian. This policy is to be implemented not just in thought, intellect, spirit, and actions but also for ensuring profitable, sustainable opportunities for developing knowledge, skills, values, and dispositions that help individuals realize their human rights, and good and balanced lives both as an Indian and as a true global citizen.

We feel pride in stating that MP is the first state to implement this policy in the session 2021-22. By declaring examination results earlier than other institutions of the state, our Institute has emerged as the pioneer in implementing this policy in its true spirit.



**Explaining the National Education Policy-2020 to the Students**

## Why IEHE?

### Establishment

- IEHE is a **State-level Autonomous Academy of Higher Education** in Bhopal, Madhya Pradesh.
- Established by the **Government of Madhya Pradesh** and managed by **The Institute for Excellence in Higher Education Society**.
- Registered under the **Society Registration Act of 1973**.

### Role Model

- Our institute's exemplary performance inspired the establishment of **Colleges of Excellence** across Madhya Pradesh.
- Reflects our pioneering role in higher education.

### NAAC Accreditation

- Accredited four times in just 29 years.
- Earned prestigious **grade 'A' thrice** and recently achieved **'A+' with a CGPA of 3.45**.

### Innovative Programs

- Pioneering academic programs in **Fashion Design, Bio-technology, Clinical Nutrition, Computer Science**, and more.
- Integrating industry trends and technological advancements.

### Rich Curriculum

- Encompasses Indian Knowledge System, Digital learning, Yoga, Sports, NCC, and NSS.
- Holistic educational experience for students.

### Teaching Methods

- Innovation in teaching methods and curriculum design.
- Technology integration for unparalleled educational experiences.

### Alumni Network

- Engaged alumni network extends opportunities beyond graduation.
- Notable presence in prestigious exams nationally and internationally.

### Exceptional Faculty

- Expert faculty committed to top-tier education.
- Master Trainers, resource persons, and Ph.D. supervisors.

### Career Development

- Comprehensive career services, internships, and placements.
- Vocational cell enhances employability.

### Vibrant Campus Life

- Student clubs, cultural events, sports, NCC, and NSS.
- Thriving beyond the classroom.

### State-of-the-Art Facilities

- Cutting-edge labs, e-content studio, and resource-rich library.
- Everything students need to excel.

### Student Welfare

- Anti-Ragging Committee, Grievance Cell, Women Cell, and Counseling.
- Safe, supportive, and inclusive environment

Why IEHE?



### ☀ **Academic Collaborations and Support Systems**

- Hosts a local chapter of **SWAYAM** and **NPTEL** (National Programme on Technology Enhanced Learning).
- Facilitates higher-level online learning from IITs and IISc for students and faculty.

### 📄 **Memorandums of Understanding (MoUs)**

- Bolsters our commitment to academic excellence and innovation.
- Robust **Mentor-Mentee System** ensures personalized guidance for holistic student development.

### 🔍 **Expansive Research Landscape**

- Seven specialized research centers empower students.
- E-learning resources and internships provide practical insights.

### 🚀 **Fostering Entrepreneurship**

- **Incubation Centre “UDGAM”** catalyzes entrepreneurial endeavors.
- Nurtures the entrepreneurial spirit and fosters innovation.

### 🏆 **Medals, Awards, and Scholarships**

- Recognizes excellence in academics, sports, and talents.
- **Director’s Medal** for outstanding contributions by final-year undergraduates.
- Faculty-sponsored **Memorial Medals** honor exceptional performance.

### 📊 **Evaluative System**

- Transparent evaluation with internal and external assessments.
- Commitment to fairness and accountability.



**NAAC Peer Team submitting the Final Report to the Director in Exit Meeting**

## COURSES OFFERED

### UG & PG Programmes

The Institute offers the following Major/Minor courses at the undergraduate level and postgraduate courses as well. The duration of each UG program is 8 semesters and the PG program is of 4 semesters. Each academic session is divided into 2 semesters. The applicant may opt for any one of the Major/Minor subjects from the scheme mentioned below for UG Programmes.

#### Faculty-wise Seat Distribution for UG

Faculty	Course	MAJOR (Subject 1)	Seats	MINOR (Subject 2)	Generic ELECTIVE (Subject 3)
		Degree with Honours		Degree with Research	
SCIENCE	B.Sc. (3 Year Degree with Honours/ 4 Year Degree with Research)	Biotechnology	100	Chemistry/ Forensic Science/ Food Science & Quality Control/ Computer Science/ Clinical Nutrition and Dietetics	<b>ARTS FACULTY</b> Academic Writing/ Kala aur Sahitya / Fashion Studies/ Geography of Tourism/ Indian History a Synoptic View/ Indian Political Thinkers/ Indian Society: Image and Realities/ Micro Economics/ Psychological Processes and Applied Perspectives. <b>COMMERCE FACULTY</b> 1. Fundamentals of Business 2. Fundamentals of Accounting 3. Basics of Income Tax 4. Business Communication <b>SCIENCE FACULTY</b> Chemistry in Everyday Life/ Crime Scene Management/ Ecology and environmental management/ Electronic Circuits and PCB Designing/ Linear programming/ Mechanics/ Nutrition and fitness/ Programming Methodology. <b>OTHER</b> Physical Education/ N.C.C./ N.S.S.
		Chemistry	150	Physics/ Mathematics/ Electronics/ Forensic Science/ Biotechnology/ Food Science & Quality Control/ Computer Science/ Geography/ Clinical Nutrition and Dietetics	
		Clinical Nutrition and Dietetics	50	Physics/ Chemistry/ Mathematics/ Electronics/ Computer Science/ Biotechnology/ Forensic Science/ Geography	
		Computer Science	50	Mathematics/ Electronics/ Physics/ Chemistry/ Forensic Science/ Geography/ Clinical Nutrition and Dietetics	
		Electronics	50	Mathematics/ Computer Science/ Physics/ Chemistry/ Forensic Science/ Geography/ Clinical Nutrition and Dietetics	
		Forensic Science	100	Physics/ Chemistry/ Mathematics/ Electronics/ Biotechnology/ Food Science & Quality Control/ Computer Science/ Clinical Nutrition and Dietetics	
		Geography	50	Physics/ Electronics/ Computer Science/ Mathematics/ Chemistry/ Forensic Science/ Clinical Nutrition and Dietetics	
		Mathematics	100	Electronics/ Computer Science/ Physics/ Chemistry/ Forensic Science/ Geography	
		Physics	50	Electronics/ Computer Science/ Mathematics/ Chemistry/ Forensic Science/ Geography/ Clinical Nutrition and Dietetics	



Faculty	Course	MAJOR (Subject 1)	Seats	MINOR (Subject 2)	Generic ELECTIVE (Subject 3)
ARTS	B.A. (3 Year Degree with Honours/ 4 Year Degree with Research)	Economics	100	Management/ English Literature/ Psychology/ Political Science/ Mathematics/ History/ Hindi Literature/ Sociology/ Geography/ Fashion Designing	<b>ARTS FACULTY</b> Academic Writing/ Kala aur Sahitya / Fashion Studies/ Geography of Tourism/ Indian History a Synoptic View/ Indian Political Thinkers/ Indian Society: Image and Realities/ Micro Economics/ Psychological Processes and Applied Perspectives. <b>COMMERCE FACULTY</b> 1. Fundamentals of Business 2. Fundamentals of Accounting 3. Basics of Income Tax 4. Business Communication. <b>SCIENCE FACULTY</b> Chemistry in Everyday Life/ Crime Scene Management/ Ecology and environmental management/ Electronic Circuits and PCB Designing/ Elementary algebra and trigonometry/ Linear programming/ Mechanics/ Nutrition and fitness/ Programming Methodology. <b>OTHER</b> Physical Education/ N.C.C./ N.S.S.
		English Literature	50	Economics/ History/ Political Science/ Psychology/ Sociology/ Hindi Literature/ Geography/ Fashion Designing	
		Fashion Designing	30	Management/ English Literature/ Psychology/ Political Science/ History/ Hindi Literature/ Sociology/ Geography/ Fashion Designing	
		Geography	50	Economics/ Political Science/ Sociology/ Psychology/ English Literature/ Hindi Literature/ History/ Fashion Designing	
		History	50	Economics/ Political Science/ Sociology/ English Literature/ Hindi Literature/ Psychology/ Geography/ Fashion Designing	
		Hindi Literature	50	Economics/ Political Science/ Sociology/ English Literature/ History/ Psychology/ Geography/ Fashion Designing	
		Political Science	100	Economics/ History/ Psychology/ English Literature/ Sociology/ Hindi Literature/ Geography/ Fashion Designing/ Fashion Designing	
		Psychology	50	Economics/ Political Science/ Sociology/ English Literature/ Hindi Literature/ History/ Geography/ Fashion Designing	
		Sociology	50	Psychology/ History/ Political Science/ Economics/ English Literature/ Hindi Literature/ Geography/ Fashion Designing	

Faculty	Course	MAJOR	Seats	MINOR	Generic ELECTIVE
		(Subject 1)		(Subject 2)	(Subject 3)
<b>COMMERCE</b>	<b>B.Com. (3 Year Degree with Honours/ 4 Year Degree with Research)</b>	<b>Commerce</b>	<b>450</b>	<b>Commerce</b>	<p><b>ARTS FACULTY</b> Academic Writing/ Kala aur Sahitya / Fashion Studies/ Geography of Tourism/ Indian History a Synoptic View/ Indian Political Thinkers/ Indian Society: Image and Realities/ Micro Economics/ Psychological Processes and Applied Perspectives.</p> <p><b>COMMERCE FACULTY</b> 1. Banking and Insurance 2. Business Economics. 3. Business Mathematics 4. Indian Economy 5. Financial Management 6. Corporate Law 7. Management Principles and Applications</p> <p><b>SCIENCE FACULTY</b> Chemistry in Everyday Life/ Crime Scene Management/ Ecology and environmental management/ Electronic Circuits and PCB Designing/ Elementary algebra and trigonometry/ Linear programming/ Mechanics/ Nutrition and fitness/ Programming Methodology.</p> <p><b>OTHER</b> Physical Education/ N.C.C./ N.S.S.</p>
<b>BUSINESS ADMINISTRATION</b>	<b>B.B.A.</b>	<b>Business Administration</b>	<b>100</b>	<b>Management</b>	<b>Business Communication</b>
<b>PHYSICAL EDUCATION &amp;</b>	<b>B.P.E.S.</b>	<b>Physical Education &amp; Sports</b>	<b>50</b>	<b>Human Anatomy</b>	<b>Sports injuries &amp; First Aid. practical- Athletes, Basketball, Gymnastics &amp; Weightlifting</b>



### Details of Post-Graduate Programme

Course	Subject	Seats	Eligibility
M.A.	Economics	30	Graduate from any discipline
M.A.	English	30	Graduate from any discipline
M.A.	Hindi	30	Graduate from any discipline
M.A.	History	30	Graduate from any discipline
M.A.	Political Science	30	Graduate from any discipline
M.A.	Psychology	30	Graduate from any discipline
M.A.	Public Administration	30	Graduate from any discipline
M.A.	Sociology	30	Graduate from any discipline
M.A.	Social Work	30	Graduate from any discipline
M.Sc.	Biotechnology	30	B.Sc. in Biotechnology/Biology
M.Sc.	Chemistry	30	B.Sc. with Chemistry
M.Sc.	Mathematics	30	B.Sc. with Mathematics
M.Sc.	Physics	30	B.Sc. with Physics
M.Com.	Commerce	30	B.Com.



NCC Cadets, Students and faculty members along with the Director celebrating the  
“Independence Day”

## Vocational & Skill Development Courses Offered by Institutional Vocational Cell

Along with the regular courses the students can simultaneously opt for the following short-term courses which will be a 'value addition' to their profile. Admission in the short-term courses is open to all irrespective of their educational or institutional background. Any vocational certificate course can be started during the session as per the demand of stakeholders under the guidelines of the Institute.

S.No.	Courses Offered
	Diploma Courses
1	Diploma in Financial Services (DFS)
2	Diploma in Human Resource Development (DHRD)
3	Diploma in Communicative English (DCE)
4	Diploma in Guidance and Counselling Psychology (DGC)
5	Diploma in Industrial Work & Management System (DIWMS)
6	Diploma in Statistical Analysis (DSA)
7	Diploma in Taxation (DIT)
8	Diploma in Creative Arts (DCrA)
9	Diploma in Computer Application (DCA)
10	Diploma in Tourism & Hospitality Management (DTHM)
11	Diploma in Forensic Science (DFSc.)
12	Diploma in Remote Sensing & GIS (DRSG)
13	Diploma in Hostel Management (DHM) *
14	Diploma in Retail Marketing Management (DRMM)
15	Diploma in Banking Financial Services and Insurance (DBFSAI)
16	Diploma in Data Science and Analysis (DDA) - NEW
Certificate Courses	
1	Certificate Course in English Creative Writing (CECW)
2	Certificate Course in Research Methodology (CRM)
3	Certificate Course in Instrumentation & Electronic Maintenance (CIEM)
4	Certificate Course in Cyber Security (CCS)
5	Certificate Course in Spoken English (CSE)
6	Certificate Course in Intellectual Property Rights (CIPR)
7	Certificate Course in French Language (CFL)
8	Certificate Course in Hostel Management (CHM) *
9	Certificate Course in Retail Marketing Management (CRMM)
10	Certificate Course in Banking Financial Services and Insurance (CBFSAI)
11	Certificate Course in Advanced Excel (CCAE) - NEW
12	Certificate Course in Intellectual Property Rights (CCIPR) - NEW
13	Certificate Course in Psychological Assessment and Tool Development (CPATD) - NEW
14	Certificate Course in Basics in Geogebra (CCBG) - NEW
15	Certificate Course in Cooking and Baking (CB) - NEW
16	Certificate Course in Emotional Intelligence (CCEI) - NEW
17	Certificate Course in Packaging and Designing (CCPD) - NEW
Training Programmes	
1	45 Hours Training Programme in Food Processing & Preservation (FPP)
2	30 Hours Training Programme in MATLAB
3	30 Hours Training Programme in SPSS
4	30 Hours Training Programme in Tally
5	30 Hours Training Programme in Traditional Art (TPTA)
6	CII-IWN-IEHE Finishing School
Special Courses	
1	Foundation Course in Civil Services Examinations (FCCSE)
2	Joint Admission Test for M.Sc. (JAM)

\* For IEHE Hostellers only



## Vocational Courses: At a glance (Session 2023-24)

SN	Course	Seats	Credits/Hours	Duration	Fees Rs.		Eligibility
					Gen.	SC/ST/OBC	
Diploma Courses							
1	DFS	30	40/600 Hrs	1year	8000/	6000/	10+2 pass
2	DHRD	30	40/600 Hrs	1year	8000/	6000/	10+2 pass
3	DCE	30	40/600 Hrs	1year	8000/	6000/	10+2 pass
4	DCP	30	40/600 Hrs	1year	8000/	6000/	10+2 pass
5	DIWMS	30	40/600 Hrs	1year	8000/	6000/	10+2 pass
6	DSA	30	40/600 Hrs	1year	8000/	6000/	10+2 pass (Maths)
7	DIT	30	40/600 Hrs	1year	8000/	6000/	10+2 pass
8	DCrA	30	40/600 Hrs	1year	8000/	6000/	10+2 pass
9	DCA	30	40/600 Hrs	1year	8000/	6000/	10+2 pass
10	DTHM	30	40/600 Hrs	1year	8000/	6000/	10+2 pass
11	DFSc.	30	40/600 Hrs	1year	8000/	6000/	10+2 (Sc./law)
12	DHM	for Girls Hostel only			800/ for all		10+2 pass
13	DRSG	30	40/600 Hrs	1year	8000/	6000/	10+2 pass
14	DRMM	30	40/600 Hrs	1year	8000/	6000/	10+2 pass
15	DBFSAI	30	40/600 Hrs	1year	8000/	6000/	10+2 pass
16	DDA	30	40/600 Hrs	1year	8000/	6000/	10+2 pass
Certificate Course							
1	CECW	15	20/300 Hrs	6 months	2500/	1875/	10+2 pass
2	CES	30	20/300 Hrs	6 months	2500/	1875/	10+2 pass (Sc.)
3	CRM	30	20/300 Hrs	6 months	2500/	1875/	10+2 pass (Sc.)
4	CIEM	30	20/300 Hrs	6 months	2500/	1875/	10+2 pass (Sc.)
5	CCS	30	20/300 Hrs	6 months	2500/	1875/	10+2 pass
6	CSE	30	20/300 Hrs	6 months	2500/	1875/	10+2 pass
7	CIPR	30	20/300 Hrs	6 months	2500/	1875/	10+2 pass
8	CFL	30	20/300 Hrs	6 months	2500/	1875/	10+2 pass
9	CHM	for Girls Hostel only			800/for all		10+2 pass
10	CRMM	30	20/300 Hrs	6 months	2500/	1875/	10+2 pass
11	CBFSAI	30	20/300 Hrs	6 months	2500/	1875/	10+2 pass
12	CCAE	30	20/300 Hrs	6 months	2500/	1875/	10+2 pass
13	CCIPR	30	20/300 Hrs	6 months	2500/	1875/	10+2 pass
14	CPATD	30	20/300 Hrs	6 months	2500/	1875/	10+2 pass
15	CCBG	30	20/300 Hrs	6 months	2500/	1875/	10+2 pass
16	CB	30	20/300 Hrs	6 months	2500/	1875/	10+2 pass
17	CCEI	30	20/300 Hrs	6 months	2500/	1875/	10+2 pass
18	CCPD	30	20/300 Hrs	6 months	2500/	1875/	10+2 pass
Training Programme							
1	FPP	45 hours training programme			1000/for all		10+2 pass
2	MATLAB	30 hours training programme			1000/for all		10+2 pass
3	SPSS	30 hours training programme			1000/for all		10+2 pass
4	Tally	30 hours training programme			1000/for all		10+2 pass
5	TPTA	30 hours training programme			1000/for all		10+2 pass
6	Finishing School	30 hours training programme			1000/for all		10+2 pass
Special Course							
1	FCCSE	50	100Hrs	8 months	2500/	1875/	10+2 pass
2	JAM	50	100Hrs	8 months	2500/	1875/	UG pass (Chemistry)

### Note:

1. Registration Fee is Rs.100/-
2. In addition to the course fee Non -IEHE students will pay Rs. 1000/as Caution Money.
3. All Students from SC/ST/OBC categories avail rebate of 25% of the course fee.
4. Offered Courses generally start from 1st August 2024.
5. The admission form once generated should be followed by fee submission through SBI Collect.
6. Printout of Admission form, fee receipt, one photograph, and relevant document to be submitted to Vocational Courses Cell, IEHE Bhopal.

## Department-wise List of Vocational Courses Proposed under NEP-2020

**Session 2024-25**

SN	Name of Department	Name of Vocational/SEC Courses-NEP-2020		
		III Sem	IV Sem	V Sem
		Subject	Subject	Subject
1	Biotechnology	Medical Diagnostics	IPR, Entrepreneurship, Bioethics & Biosafety (SEC)	Computational Tools for Biotechnology (SEC)
2	Chemistry	Medicinal Plants	Herbal Technology	Chemistry In Naturopathy
3	Forensic Science	Handwriting Identification	Tools & Techniques In Criminal Investigation	Forensic Medicine and Drug Abuse
4	Physics	Physics Workshop Skills	Basic Instrumentation Skills	Computation and Visualization with Scilab
5	Electronics	Design Fabrication of PCV using TINA Software	Basic Instrumentation Skills	Electrical Circuits and Network Skills
6	Food Science & Quality Control	Nutrition and Dietetics	Dairy Management	Food Processing: Beverage, Manufacturing and Management
7	Computer Science	Web Designing	Cloud Computing	PHP (SEC)
8	Mathematics	Mathematical Logic (SEC)	Optimization Techniques (SEC)	MATLAB: Basics and Applications (SEC)
9	Physical Education	Exercise Prescription & Therapeutic Exercise	Talent Identification in Sports	Sports Journalism
10	Fashion Designing	Handicrafts	Fabric Ornamentation, Needle Craft	Fabric Ornamentation- Painting
11	English	Creative Writing	Business Communication	Translation Studies
12	Hindi	व्यक्तित्व विकास	साहित्य और सिनेमा	विज्ञापन: अवधारणा और प्रयोग
13	History	Tourism, Transport, and Travel Services	An Appreciation: An Introduction to Indian Art	Archives and Museums
14	Psychology	Career Counseling	Community-Based Rehabilitation	Counseling and Psychotherapy
15	Political Science	Managing Election and Election Campaign	Your Laws, Your Rights	Management of NGO
16	Sociology	Social Survey and Report Writing	Social Welfare & Social Security	Forensic Sociology
17	Geography	Ecotourism	Basics of Remote Sensing, GIS and GPS	Remote Sensing
18	Economics	Retail Management	Financial Services and Insurance	Event Management
19	Commerce	(A) Digital Marketing (SEC) (B) Event Management (SEC)	(A) Personal Finance and Planning (SEC) (B) E-Commerce (SEC)	(A) Export and Import Management (SEC) (B) Event Management (SEC)
20	BBA	(A) Personal Finance and Planning (SEC) (B) Customer Relationship Management	(A) E-Accounting & Taxation (SEC) (B) Digital Marketing	(A) Import Export Management (B) E-Commerce (SEC)
21	NCC	Security Services (To be approved in BOS)		

- Any vocational/SEC(NEP-2020) will run with minimum 20 students enrolled.



## **Admission Guidelines for Undergraduate and Postgraduate Program**

### **(2024-25)**

The Institute, in principle, follows the rules and guidelines of the Department of Higher Education, Government of Madhya Pradesh issued for the relevant academic session. Availing its autonomy, the Institute can make procedural changes, adopt its admission calendar, and address the issues arising out of admission guidelines. By and large, the Institute will comply with the State Government's directives regarding reservations, weightage, and eligibility.

#### **1. Admission Process**

**All the procedures and activities regarding admission will be conducted and will be accorded in strict adherence to the “Admission and Counseling Schedule” provided under these guidelines. Applicants should strictly follow the prescribed timeline.**

Eligible applicants must submit an online Registration cum Application form available on the Institute's website [www.iehe.ac.in](http://www.iehe.ac.in) within the prescribed period along with a fee of **Rs. 500/- (Nonrefundable)**, MMVY and MMJKY Applicants will also pay the registration fee) payable through SBI ePay online payment mode. Registration will be done in only one phase with a CLC round of vacant seats. The registration will be reopened only when a particular subject doesn't fulfill the minimum application requirement. Neither the printed application form nor any document therein needs to be submitted or sent to the Institute before verification and counseling. The received online applications will be considered for the available vacancies in order of preference given by the applicant for various subjects/faculties. For each Major subject separate counseling list comprising of the applicants shortlisted based on their merit of marks (with weightage) if any, will be displayed on the notified date on the Institute's portal.

Shortlisted applicants have to compulsorily upload their scanned self-attested documents on the institute's website on the prescribed dates as well as **e-Pravesh Form on offline mode with Institute ID & Password at the time of document upload**. Candidate must choose their minor subject. Only those students will be contacted by the admission committee whose documents are not clear or incomplete. Any wrong information in the submitted form will cease his/her claim for admission at the time of counseling. After due verification of the documents, the prescribed fee of the concerned course should be deposited to complete the process of provisional admission.

Applicants who fail to attend counseling in a subject will not be considered for that subject or a lower choice in subsequent counseling (s) on the same registration. The applicant who takes admission in a subject of his/her lower preference will automatically be upgraded to a vacant seat of higher preference in order of merit. Applicants may update online, their preference of subjects in their prior submitted form on the notified dates using their password. For major subjects that have less than 25 students enrolled/admitted, such students shall be directed to join their next preference.

Admissions granted during counseling will be provisional, subject to the verification of eligibility, if need be, from the university and any other facts as deemed necessary by the Institute. The Institute reserves its right to cancel all admissions that do not conform to any of the rules of the Institute regarding attendance, discipline, and incomplete formalities within the prescribed timeline.

## 2. Eligibility

### 2.1. Academic Qualification for First Semester:

- 2.1.1.** A minimum of 60% marks in the 10+2 examination of a recognized board for admission in UG and 60% marks in the UG examination of a recognized university for admission in PG is the basic eligibility. A relaxation of 5% to applicants from Schedule Caste (SC), Scheduled Tribes (ST), and Physically Challenged categories will be given.
- 2.1.2.** Students from the Science stream may apply for Major and Minor subjects in the faculty of Science/Business Administration, Commerce, Arts, and Physical Education & Sports (BPES); students from the Commerce stream may apply for subjects in Business Administration, Commerce, Arts and Physical Education & Sports (BPES) subject and students from Arts stream may apply for subjects of Arts faculty, Business Administration and Physical Education & Sports (BPES).
- 2.1.3.** 10+2 students of M.P. Board with additional qualification of Vocational Courses of any of the allied subjects of Science like Laboratory Science, Medicine Management & System Analysis, Clinical Biochemistry, Micro Biology and Management Systems, Computer subjects, Printing of Data-processing, DTP Package Programming, Workshop Practice conducted by MP Board of Secondary Education will be eligible for admission only on the submission of the relevant eligibility certificate issued by the Barkatullah University. In case of any contradiction or discrepancy regarding eligibility, the eligibility certificate issued by the University would be final and binding.

### 2.2. Maximum Age

There is no upper age limit for admission in the undergraduate and postgraduate courses.

### 2.3. Domicile

10% of seats in each Major subject will be reserved for students from other states. **A domicile certificate of the concerned state should be produced to avail of this facility. Admission will be given only to students who have passed 10<sup>th</sup> or 12<sup>th</sup> from outside the state.** On all other state seats, admission will be accorded first to the domicile applicants of M.P. or those whose parents are posted in M.P. as employee of the Central Government, Nationalized Banks, and Professional Organizations of Central Government.

## 3. Reservation

The Reservation Policy of the State Government is strictly followed by the Institute for the following categories. The details are available in the Guidelines for Admission issued by the Department of Higher Education, Govt. of M.P. Important highlights are cited below:

Category	Reservation
<i>Scheduled Caste*</i>	<i>As per Pravesh Niyam and Margdarshi Siddhant of the Department of Higher Education, Govt. of Madhya Pradesh Session 2023-24</i>
<i>Scheduled Tribes*</i>	
<i>Other Backward Classes (Non-Creamy Layer)</i>	
<i>Wards of FF, Defense Personnel, Central Armed Forces, etc. (Please see Govt. rule for details)</i>	
<i>Physically Challenged (PH) (in each category)</i>	
<i>Girls (in each category)</i>	
<i>EWS</i>	



#### **4. Weightage as per Government Rules regarding NSS, NCC, Sports, Co-curricular Activities**

- 4.1** Weightage will be given only for determining the order of merit. It cannot be availed for obtaining the minimum eligibility requirements of marks. Weightage can be claimed only on one certificate. Applicants are therefore advised to stake their claim on the certificate which will fetch them the maximum weightage. If the weightage claimed is incorrect, the applicant might be disallowed from attending the counseling. The weightage certificate (if required) should be duly countersigned by the relevant authority (as mentioned in the Govt. rules). **Such a certificate MUST be produced at the time of counseling, in case of failing, claimed weightage will not be considered.**
- 4.2** Wards (Son/Daughter) of the Employees of Higher Education, Govt. of M.P. will be entitled to take provisional admission under the rule of the state government of Madhya Pradesh.
- 4.3** Students who have passed the honors course and are eligible for admission to postgraduate classes in the same subject are entitled to 10% weightage.
- 4.4** For outstanding applicants with undermentioned required eligibility there is a provision for direct admission (out of merit). Such applicants must fill out the online admission form and report to the Professor in charge (Admissions) on the date of first counseling.

#### **Required Eligibility (as per Govt. rules)**

- 1) NCC Best Cadet of the National Level**
  - 2) Participation in National or International Level organized by Olympic/Asiad/Sports Authority of India/SGFI**
- 4.5** Weightage can be claimed on the certificates obtained during the last 4 consecutive years at the school level. Important information regarding weightage is given below:

#### **Details of Additional Weightage**

Select the stream/activity in which you are eligible to claim maximum weightage. The last four consecutive sessions at the school level will be considered.

*As per Pravesh Niyam and Margdarshi Siddhant of the Department of Higher Education, Govt. of Madhya Pradesh Session 2024-25.*

#### **5. Paying Fee Online through SBI ePay**

The Registration and admission fee can be remitted by using internet banking/Debit Card/Credit Card through the Payment Gateway of SBI (Link Given on IEHE Admission Dashboard). A nominal amount might be additionally charged by the bank for the transaction.

##### **5.1 The Procedural Steps:**

- Select Payment Link (Pay Registration Fee / Pay Admission Fee) on the Admission Page on [www.iehe.ac.in](http://www.iehe.ac.in)
- Enter your Application No., e-Pravesh ID (Offline Mode), and Password for the Payment Process.
- Choose your Generic Subject.
- Click on the Pay Registration Fee/ Pay Admission Fee Button and Click on Proceed to payment.
- Now click on Pay Now.

- Select Payment Option from Payment detail. The page is displayed with the following options for payments.
  - Debit/Credit Card
  - Internet Banking
  - BHIM UP
  - NEFT
  - SBI Branch Payment

Choose the desired option for the payment. Retain a print of or save the receipt generated online.

## 6. Steps for filling out the Online Registration cum Application Form

- Read the Admission Guidelines thoroughly.
- For additional weight identify the certificate that will fetch the highest possible single weight.
- Refer to the previous year's cut-off marks for different subjects displayed on the website to assess the trend and decide the subject preferences. The trend may change for which the Institute will not be responsible.

### 6.1 Documents needed for filling out the form

- Debit/Credit Card/Internet Banking etc for Online Payment of Registration.
- 12th Mark sheet, Caste Certificate (*if applicable*), Income Certificate (2022-23), Aadhar Card No. and Additional Weightage Certificate (*if applicable*).

### 6.2 The Application Form–Divided into Five Steps

1. Personal Details
2. Academic Details
3. Preference of Faculty and Major subjects
4. Reservation and Other Information
5. Upload Photo and Pay Registration Fee

To navigate through these components, click the **NEXT** button. Fill in the correct eligibility particulars and all the mandatory information required. Incorrect information will hamper the navigation. A printout of the application form may be retained by the applicant for further use/future reference. **The entered password and application number should be duly noted by the applicant** for further updations or any other online activities related to admission.

## 7. Allotment of Subjects

- 7.1** Under the National Education Policy the students of second year will also be able to swap Major and Minor Subject.
- 7.2** Under the National Education Policy, the students will also be able to get the benefit of online certificate/diploma courses/degree courses and degrees with research.



## ONLINE ADMISSION SCHEDULE (UNDERGRADUATE)

Availability of online registration/application forms at the Institute's web portal [www.iehe.ac.in](http://www.iehe.ac.in)

PHASE I	
Particulars	Date
Online Registration: All Faculty (Science, Commerce, Arts)	01.05.2024 to 21.05.2024
Display of List of Shortlisted Applicants for Documents Verification	25.05.2024
Documents upload on portal by applicants for Document Verification	26.05.2024 to 04.06.2024
Online Document Verification of Uploaded Documents by Employee Login (All Faculty)	27.05.2024 to 05.06.2024
Display of Verified Students List	27.05.2024 to 05.06.2024
Fee Deposition:(Online through <a href="http://www.iehe.ac.in">www.iehe.ac.in</a> Only)	27.05.2024 to 06.06.2024
PHASE II	
Particulars	Date
Online Registration and Choice Update (Except Already Registered)	27.05.2024 to 14.06.2024
Display of List of Shortlisted Applicants for Documents Verification	19.06.2024
Documents upload on portal by applicants for Document Verification	19.06.2024 to 23.06.2024
Online Document Verification of Uploaded Documents by Employee Login (All Faculty)	21.06.2024 to 24.06.2024
Display of Document Verified Students List	21.06.2024 to 25.06.2024
Fee Deposition:(Online through <a href="http://www.iehe.ac.in">www.iehe.ac.in</a> only)	21.06.2024 to 27.06.2024
PHASE III	
College Level Counselling (CLC Round)	
Particulars	Date
Online Registration and Choice Update (Except Already Registered)	20.06.2024 to 27.06.2024
Display of List of Shortlisted Applicants for Documents Verification	29.06.2024
Documents upload on portal	30.06.2024 to 03.07.2024
Online Documents Verification	30.06.2024 to 04.07.2024
Fee Deposition:(Online through <a href="http://www.iehe.ac.in">www.iehe.ac.in</a> only)	30.06.2024 to 05.07.2024
Payment Seat against NRI	
Particulars	Date
Online Choice Update and Payment Seat against NRI	20.06.2024 to 27.06.2024
Display of List of Shortlisted Applicants for Documents Verification	29.06.2024
Documents upload on portal	30.06.2024 to 03.07.2024
Online Documents Verification	30.06.2024 to 04.07.2024
Fee Deposition:(Online through <a href="http://www.iehe.ac.in">www.iehe.ac.in</a> only)	30.06.2024 to 05.07.2024

## ONLINE ADMISSION SCHEDULE (POST GRADUATE)

Availability of online registration/application forms at the Institute's web portal [www.iehe.ac.in](http://www.iehe.ac.in).

PHASE I	
Particulars	Date
Online Registration: All Faculty (Science, Commerce, Arts)	05.05.2024 to 26.05.2024
Display of List of Shortlisted Applicants for Documents Verification	29.05.2024
Documents upload on portal by applicants for Document Verification	30.05.2024 to 14.06.2024
Online Document Verification of Uploaded Documents by Employee Login (All Faculty)	31.05.2024 to 14.06.2024
Display of Verified Students List	31.05.2024 to 15.06.2024
Fee Deposition:(Online through <a href="http://www.iehe.ac.in">www.iehe.ac.in</a> Only)	31.05.2024 to 16.06.2024
PHASE II	
Particulars	Date
Online Registration: All Faculty (Science, Commerce, Arts)	27.05.2024 to 20.06.2024
Display of List of Shortlisted Applicants for Documents Verification	22.06.2024
Documents upload on portal by applicants for Document Verification	23.06.2024 to 28.06.2024
Online Document Verification of Uploaded Documents by Employee Login (All Faculty)	24.06.2024 to 29.06.2024
Display of Verified Students List	24.06.2024 to 30.06.2024
Fee Deposition:(Online through <a href="http://www.iehe.ac.in">www.iehe.ac.in</a> Only)	24.06.2024 to 30.06.2024

## ONLINE ADMISSION SCHEDULE FOR SECOND AND THIRD

Availability of online registration/application forms at the Institute's web portal [www.iehe.ac.in](http://www.iehe.ac.in)

PHASE I	
Particulars	Date
Online Registration: All Faculty (Science, Commerce, Arts)	11.05.2024 to 20.06.2024
Display of List of Shortlisted Applicants for Documents Verification	24.06.2024
Documents upload on the portal by applicants for Document Verification	25.06.2024 to 30.06.2024
Online Document Verification of Uploaded Documents by Employee Login (All Faculty)	25.06.2024 to 30.06.2024
Display of Verified Students List	25.06.2024 to 30.06.2024
Fee Deposition:(Online through <a href="http://www.iehe.ac.in">www.iehe.ac.in</a> Only)	25.06.2024 to 30.06.2024



## **8. CHANGE OF SUBJECTS FOR ADMITTED STUDENTS**

- 8.1** Admitted undergraduate students will be allowed to apply online to change their Major/Minor subjects. Changes will be allowed in order of merit, according to eligibility and the available vacancy in the demanded subject

## **9. Important Information**

- 9.1** All necessary information regarding admission will be provided on the website of the Institute. No separate communication will be made with the applicants. However, the Institute may use the SMS facility to provide some more important information about the mobile number provided by the applicant. The institute will not be responsible for any loss of information. Candidates are therefore advised to regularly visit the institute's website for news updates.
- 9.2** In case of any ambiguity in these guidelines, the rules of the Madhya Pradesh state government will prevail.
- 9.3** Helpline numbers/e-mail will be provided by the Institute on its website and the applicants may avail of these facilities for seeking any admission information.
- 9.4** **Girls/Boys students** needing hostel facilities should indicate their choice in the online admission form. A separate form, available on the website should be filled out **if admitted**. The hostel will be allotted in order of merit and in keeping with the Government of M.P. reservation policy/rules.
- 9.5** At the time of admission original TC and migration certificate are not compulsory.
- 9.6** Candidates may produce the internet copy of their 10+2 marks sheet if the original mark sheets are awaited from the concerned school.
- 9.7** No documents are required in hard copy as we believe that paperless promotion supports environmental sustainability.
- 9.8** Counselling students whose results are awaited will have to secure provisional admission by depositing the prescribed fee by the prescribed date. Admission of such candidates will be regularized only after the declaration of the result of the awaited qualifying examination.
- 9.9** Additionally, 10% of seats will be reserved for candidates from outside MP and admission will be granted on producing a domicile certificate from the migrating state in addition to a police verification report, an undertaking, and an eligibility certificate from the university. (MMVY and MMJKY are not applicable for outside M.P. Candidates). Other State applicants will be eligible to get admission only if their percentage of marks is not below the last cutoff of the general category applicant of all major subjects.
- 9.10** The university rules may mandate some candidates to submit an eligibility certificate at the time of provisional admission for ICSE and other board and migration certificates within the prescribed time limit.
- 9.11** **To promote global exchange, admissions are open to Foreign Nationals subject to the required permission from Governments and Agencies.**
- 9.12** **Fee structure for the Foreign Nationals is mentioned in Annexure-II(a). The fee would be accepted only in Indian currency**
- 9.13** Admission to the candidate whose guardian (as per the M.P. government admission rules) is under transfer will be given admission only in the event of vacancies and provided the candidate has secured admission in any of the affiliated colleges of M.P. A copy of the transfer order along with the joining report should be submitted therein.
- 9.14** Full-time government/private employees (except school teachers under the step-up scheme) will not be eligible for regular admission. Part-time employee will have to submit an NOC from their employing authority.

- 9.15** In Undergraduate courses, if less than 25 students take admission, and in Postgraduate courses, if less than 10 students take admission then those particular courses will be closed for the current session.
- 9.16** In the event of cancellation/ expulsion/ voluntary quitting of admission, the applicant/ candidate is entitled to only a refund of caution money. The applicant/candidate has to mandatorily submit a copy of the original TC issued by the IEHE.
- 9.17** Admitted students who remain absent from classes continuously and fail to submit all the required documents necessary for enrollment shall be liable for the late fee penalty levied by the University.

## **10. Refund of Fees**

- 10.1** In the event of admission to any Technical/ Professional Course of any recognized Indian University/Institute the relevant proof of the admission should be produced before the first-semester examination of IEHE, for securing a refund as per UGC guidelines, MP State government guidelines, and notifications. If the candidate fails in the timely submission of required documents, only caution money will be refunded within three years from the date of admission. In the case of self-financing courses, only the caution money will be refundable.
- 10.2** Admission fee including caution money (after deduction of admission process fee Rs 100/-) will be refunded to the students, after admission but before the beginning of regular classes, in case he or she leaves the institute/ is declared as failed/ online admission is canceled.
- 10.3** After the beginning of the regular classes, only the caution money will be refunded to the student if he/she leaves the institute. He or she will not be entitled to any other refund.
- 10.4** The fee will be refunded to the students under UGC Notification on submission of the document related to his/her admission to any technical or professional course in any other Institution.
- 10.5** The fee refund will be done only after the deposit of the entire prescribed fee receipt.
- 10.6** Every student will have to pay Rs 2000/- as caution money for admission in the Commerce and Arts and Rs 5000/-in Science Faculty.
- 10.7** Provisionally admitted students whose results were awaited but have eventually failed will be entitled to a fee refund after the deduction of the procedure fee of Rs. 100.

## **11 Admission in Third, Fifth & Seventh Semester**

- 11.1** All the students admitted to UG second year will be allowed to choose a Major, Minor, Vocational Subject, and Elective subject once again by National Education Policy.
- 11.2** All UG Third/Fourth/Fifth-semester students will choose the vocational subject at the time of admission.
- 11.3** The student will be promoted to the next semester if he/she secures at least half of the total credits in a semester. In case the student secures less than half of the total credits in any semester, then the student will be declared fail in that semester and he/she will be asked to repeat the entire semester and that semester will be treated as a zero semester. In such case, the students will not be promoted to the next semester and seats will be kept reserved for such students. He/She shall be eligible for admission in the second/fourth (failed semester) the next scheduled semester time.
- 11.4** The process of admission of UG & PG first-year students to UG & PG second year will begin on the Institute portal from 27/06/2024.

Any dispute and consequent legal proceedings will be subject to the jurisdiction of Bhopal only.

## 12. LIST OF DOCUMENTS TO BE SUBMITTED BY STUDENTS

Documents are to be submitted by students online at the time of counseling. No documents are required in hard copy.

- Scanned original mark sheet of Qualifying Examination (10+2)
- Scanned original mark sheet of class X as proof of Date of Birth
- Scanned original Transfer Certificate (*Not compulsory*)
- Scanned original Migration Certificate (*Not compulsory*)
- Scanned original Caste Certificate (*if applicable*)
- Scanned original Category Certificate (*if applicable*)
- Scanned original Character Certificate
- Scanned original Below the Creamy Layer Certificate for OBC candidates seeking reservation
- Scanned original Domicile Certificate
- Scanned original Income Certificate (*if applicable*)
- Scanned original Eligibility Certificate (*if required*)
- Scanned original NSS/NCC Certificate
- Scanned original Sports/Co-curricular Achievement Certificates
- Scanned original recent passport-size colored photograph
- Scanned original Self-Attested Affidavit for Anti Ragging.
- Scanned original Notarized Affidavit for NRI/Payment Seat
- Scanned original Self-Attested Affidavit for students from outside of M.P
- Scanned original Police Verification Certificate (for candidates from out of M.P.)
- Scanned original e-Pravesh form offline in online mode

## 13 ADMISSION TO FIFTH SEMESTERS OF UNDERGRADUATE PROGRAMME UNDER NEP

**13.1** Admission in UG Fifth Semester: A candidate who has passed the First, Second, third, and fourth semesters by earning the required credits of an Undergraduate Course may be admitted to the fifth semester of the same course.

**13.2** An admitted student may be given provisional admission to the next semester with the specific understanding that the student shall clear the previous semester backlogs as per provisions appearing therein. Such a student, in the meantime, may pursue his/her studies for the next higher semesters and appear in examinations for the same along with the examination of the lower semester.

**13.3** All students of the V<sup>th</sup> semester are required to promote themselves in the e Pravesh portal after submission of the Institute admission fees.

## 14 ADMISSION TO SEVENTH SEMESTERS OF UNDERGRADUATE PROGRAMME UNDER NEP

**14.1** Admission in UG Seventh Semester: Students with a CGPA of 7.5 or more are eligible for admission in the seventh semester.

**14.2** First preference shall be given to Ieheians.

**14.3** In case of vacancies of seats students of other Institutions/Colleges/Other states shall also be eligible.

## ADMISSION TO NRIs/PAYMENT SEAT

Admission will also be granted to Non-Resident Indians (NRI) and Foreign nationals subject to the relevant rules/ instructions of the government of Madhya Pradesh in the first year of the above-mentioned degree under NEP and post-graduate courses provided the candidates produce/submit the following documents at the time of admission:



- a. Students Visa
  - b. Eligibility Certificate of Barkatullah University, Bhopal.
  - c. Scholarship holders have to obtain a no-objection certificate from the Embassy of the country of which the candidate is a national.
  - d. Medical-Certificate of Medical-Board of Government of Madhya Pradesh, Bhopal.
  - e. Police Verification Report from the Home Department.
- Additionally, 10% of the total seats in each course are reserved for NRI/Foreign students. In case these seats remain vacant, they will be made available as payment seats for Indian nationals. However, the criteria of eligibility for admission will not be relaxed even for the payment seats. The NRI fee structure will be retained. Admission will be provided based on a merit list prepared for payment seats separately.
  - NRI students/ Payment seat students admitted on payment seats will have to abide by the fee structure applicable to NRI/Payment seats for all three years of the Degree Course.

***Note: On all other issues related to admission the guidelines/rules of the state government will be applicable.***

## **Fee Particulars**

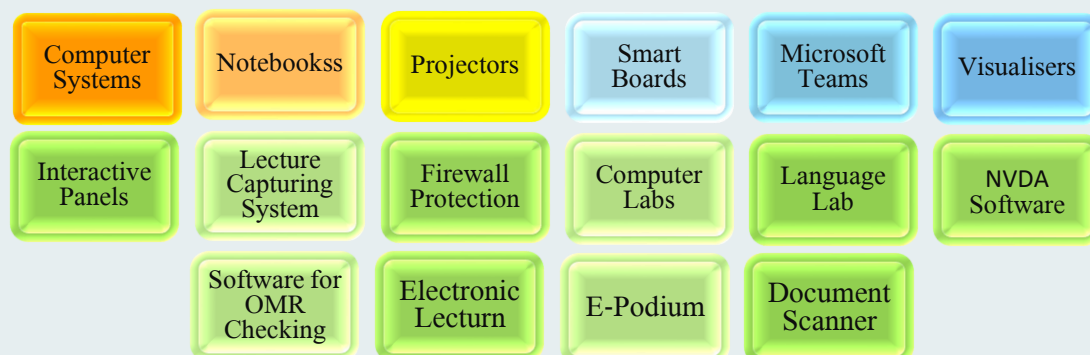
- Payment seat students are also eligible for MMVY but they will get the benefit of an exemption only from the Institute's normal fee for that course.
- Fee should be deposited by the mode and procedure prescribed by the Institute.
- The fee structure may be revised, if need be, in the subsequent academic sessions.
- Except otherwise stated in these guidelines, the fee once paid will not be refunded.
- A student who withdraws from the Institute has to pay the fee provisioned for the entire semester. A transfer certificate will be issued only when all the dues are settled.
- University Fee such as (i) Enrolment Fee (ii) Migration Fee (iii) Degree Fee (iv) Other fees as prescribed by Barkatullah University are payable in addition to the Institute's Fee. (Nonrefundable)
- For Fee Structure please refer to **Annexure-II**.
- Caution money will be refundable in or within 3 years of the student's exit. Any claims thereafter will not be entertained (**Original Receipt will be compulsory**).

## **Note**

- i. Applications are invited for the admission in second, third, and fourth year of the Institute for session 2024-25. Admission can be given in the desired subject as per admission rules of the Institute if there is any vacancy.
- ii. In case of any doubt or dispute regarding admission, the decision of the Director of the Institute will be final and binding.
- iii. In case of non-submission of fee, the Director will have the right to cancel the admission.
- iv. For all matters about admission, the candidates/guardians are advised to contact **Dr. Sharda Gangwar, Professor In-Charge of Admission.**

## Teaching Methodology

The Institution is continuously reengineering its academic process to make it student-centric. To actualize this process, the Institution strived to equip it with various ICT tools, Presently, the Institute has the following ICT enabled Tools:



- **Outcome-Based Education**

While drafting the syllabi, the Institute precisely focuses on COs, PSOs, and POs. Bloom's taxonomy has been thoroughly addressed and identified in the curriculum. There is a proper mapping of COs with PSOs and then PSOs with POs to ensure the achievement of Outcome Based Education (OBE).

- **Indian Knowledge System**

With the adoption of NEP 2020, the Institute has taken conscientious action to incorporate the Indian Knowledge System in all our courses. The medium of instruction in the Institute is English and Hindi, which helps students understand the concept in a better way. Students are also motivated to take up online courses.

- **ICT-Based Learning Education System**

The Institute aims to introduce students to fundamental subject concepts while fostering critical thinking and analytical skills. In addition to regular lectures (both online and offline), students participate in group discussions, seminars, live projects, and tutorials. Our dedicated faculty is readily available to provide guidance and support.

The Institute takes immense pride in informing that online educational training was imparted to the teaching staff and students during the pandemic, which resulted in the successful implementation of online teaching and learning on their part. Such initiative encouraged blended learning among the students which proved to be even more successful than previous teaching methods in the Institute.

## Compulsory Uniform and Identity Card

The uniform is compulsory for all students. This comprises of:

- For **Boys**: Trousers (**Dark Grey**), Full Sleeves Shirt (**White**), Tie (**Maroon**).
- For **Girls**: Salwar, Dupatta (**White Plain**), and Knee Length Kurta (**Dark Grey**).

**Dark Grey** –



**Maroon** –



Wearing of Tie is compulsory for boys except from **1<sup>st</sup> April to 30<sup>th</sup> June (Summer of every year)**. Violation of the dress code is considered to be an act of indiscipline and is therefore punishable. Boys and Girls should strictly follow the specified uniform. **Any embroidery embellishments** or variations in the uniform are not allowed. **Designer shirts, Designer Salwar, Designer Chunni, and Chudidhar should not be worn**. A fine of Rs.100/- per day will be imposed initially and Rs.200/- per day for subsequent violations of proper uniform.

In addition, all the students of vocational courses must wear their identity cards during their stay in the campus.

## Discipline

- Candidates with criminal records and proven acts of any indiscipline will not be entitled to admission. In case of any in disciplinary and criminal activity in the post-admission period, the decision regarding his/her continuance at the Institute would rest with the Director.
- **Candidates charge-sheeted for vandalism and ragging will not be eligible for admission under UGC regulation no. F-1-16/2007(CPP 11) April 2009. The Zero Tolerance Policy about ragging will be applicable as per the letter No. 829/469/आउशि/शा-1/08 dated 18 June 2008 of the Higher Education Department.**
- If any candidate is found to have secured admission through fraudulent means suppression misrepresentation of facts or a mistake or oversight, his/her admission will be canceled at any stage of his/her study in the Institute.
  - If a student remains absent for more than a week without prior information to the concerned Head of the Department his/her admission is liable to be cancelled.
  - Students should maintain discipline in the class as well as within the campus premises.
  - Students must come in proper uniform otherwise they are liable to be fined.
  - Students should read the notice board regularly, to keep themselves updated on the day-to-day events of the Institute.
  - It is strictly compulsory for every student entering the Institute premises to wear the Identity Card provided by the Institute, failing which disciplinary action may be taken against the student. At the time of leaving the Institute, the Identity Card has to be submitted along with the application for a Transfer Certificate, for record. The Identity Card, once issued, will remain valid for the duration of the course to which a student has been admitted.
  - Non-IEHE students admitted to various vocational courses must come with an Identity card which is provided by the Vocational Cell.
  - **Acts of misbehavior, chewing of tobacco, smoking, or intake of any kind of intoxicants within the premises are strictly prohibited.**
  - Students are permitted to use mobile phones within the campus. The use of mobile phones for entertainment is strictly prohibited. The mobile phones will be seized if the rule is violated.
  - No excursions, picnics, meetings, or any other get-together can be organized without the prior permission of the Director of the Institute. The Institute will not be held responsible for any untoward incident that may happen on an excursion, a picnic, or a tour. When an application for permission is submitted it will be presumed that the students have taken previous permission from the parents/guardians to join the party.



- **Carrying arms and weapons is a punishable offense.**
- **A student can be fined/suspended or rusticated for an act of indiscipline.**
- **In all disciplinary matters, the decision of the Director of the Institute will be final and binding.**

*As per UGC Regulations for curbing the menace of ragging in higher educational institutions, 2009 under Section 26(1)(g) of the University Grants Commission Act, 1956 Ragging is strictly prohibited and is a punishable offense. The regulation mandates every student and their guardian to submit a duly signed affidavit to this effect along with the admission form.*

## **Medium of Instruction**

The medium of instruction in the Institute is bilingual, and students are free to use Hindi/English for answering question papers. The students are however groomed to have a command over both written and spoken skills in English as well as in Hindi.

## **Institute Timings**

### **Class Timings**

The class timetable is scheduled between **8.40 am to 5.40 pm**. The timings may be changed or revised as per the requirements.

### **Library Timings**

The library is open from Monday to Saturday from **9:30 am to 5:00 pm** for all students and staff members. Hostel students can avail of the library facility in the evening also.

### **Office Timings**

The office of the Institute will be open from **10:00 am to 6:00 pm** except on Saturday of every month.



**Students attending the NPTEL Workshop**

## Examination System under NEP – 2020 System

### NPA Rules

1. 75% attendance is compulsory to be eligible for the external examination
2. Only 15% attendance will be condoned on medical grounds. Only the certificates that are submitted immediately after coming back from the medical leave will be accepted.
3. Students securing less than 20% marks in each subject/course in the internal exam are not allowed to appear in the external examination.

### Scheme for the Distribution of Marks in Internal Evaluation:

A scheme designed as per the centralized Ordinance No. 14-A issued by DHE (Semester System-NEP, w.e.f. the Session 2021-22)

Scheme (for Theory Course)	
Internal (CCE): 40% (40 marks) External: 60% (60 marks)	
Internal Assessment Modes	
1. Class Test # ( <i>best 2 out of 3</i> )	2×10 marks
2. Any one of the following: <ul style="list-style-type: none"><li>• Quizzes/ Objective Tests ## (<i>best 1 out of 2</i>)</li><li>• Group Tasks (<i>Group Discussion/Fishbowl Technique; Role-Play; Authentic-Problem Solving</i>)</li></ul>	08 marks
3. Any one of the following: <ul style="list-style-type: none"><li>• Home Assignments (<i>followed by presentation</i>)</li><li>• Class Assignments</li><li>• Class-Teaching</li><li>• Poster Presentations</li><li>• Portfolios</li><li>• Annotated Bibliographies *</li><li>• Reports *</li><li>• Book Review*</li><li>• Article Review*</li><li>• Journal Writing*</li><li>• Paper Presentations*</li><li>• Seminar*</li><li>• Field Assignments*</li></ul> <p>* <i>Only for advanced learners.</i></p>	08 marks
4. Attendance <ul style="list-style-type: none"><li>• 75%-80% : 01 mark</li><li>• 80%-85% : 02 marks</li><li>• 85%-90% : 03 marks</li><li>• 90% and above: 04 marks</li></ul>	04 marks
External Examination ( <i>End of examination</i> )	60 marks

### # Various options for conducting Class Tests are as follows:

- Open-Book/Open- Notes Tests/Class Assignments
- Self-Test/Online Test

- Essay /Article Writing
- Case Studies (*Advance Learners*)
- Recall Type – Filling Blanks (*One word / Phrase Answers*)

**## Quizzes/ Objective Tests should include the following types of questions:**

- Recognition Type (*such as MCQS; Multiple Response; True of False; Matching; Classifying*)
- Recall Type – Filling Blanks (*One word / Phrase Answers*)

*Scheme for the distribution of marks in internal evaluation*

Scheme for AECC (NEP: only for Sem I and Sem II students) Session 2021-22	
Internal (CCE) – 40% (40 marks) External – 60% (60 marks)	
<b>Internal Assessment Modes: for Hindi, English and Digital Awareness</b>	
1. Class Tests (best 1 out of 2)	18 marks
<b>Note:</b> For the Digital Awareness paper, the class test should be based on lab work.	
2. Quizzes (best 1 out of 2)	18 marks
<b>Note:</b> For Digital Awareness paper, Quizzes should be based on lab work	
3. Attendance –	04 marks
<ul style="list-style-type: none"> <li>• 75% - 80% : 01 marks</li> <li>• 80% - 85% : 02 marks</li> <li>• 85% - 90% : 03 marks</li> <li>• 90% &amp; above: 04 marks</li> </ul>	
<b>External Evaluation (End of Semester)</b>	60 marks
<b>Internal Assessment Modes: for Environmental Studies</b>	
1. Class Test (best 1 out of 2)	11 marks
2. Project Work	25 marks
3. Attendance –	04 marks
<ul style="list-style-type: none"> <li>• 75% - 80% : 01 marks</li> <li>• 80% - 85% : 02 marks</li> <li>• 85% - 90% : 03 marks</li> <li>• 90% &amp; above: 04 marks</li> </ul>	
<b>External Evaluation (end of Semester)</b>	60 marks

**Note:** All the tests/quizzes should be conducted in the extra class. Data and time for extra classes will be notified by concerned teachers with the consent of the head of the department.



## SCHEME FOR LABORATORY COURSE

	Internal – 40% (40 marks) External – 60% (60 marks)	Internal – 50% (50 marks) External – 50% (50 marks)
Internal Assessment Modes		
Lab work assessment # (best 2 out of 3)	2×10 marks	2×13 marks
Viva-Voce/Lab Quiz ## (best 2 out of 3)	2×08 marks	2×10 marks
Attendance <ul style="list-style-type: none"> <li>75%-80% : 01 mark</li> <li>80%-85% : 02 marks</li> <li>85%-90% : 03 marks</li> <li>90% and above: 04 marks</li> </ul>	04 marks	04 marks
External practical examination (semester-end examination)	60 marks	50 marks

# **Lab work assessment** should include laboratory work. Computer simulations/Virtual Laboratories, Craftwork, Work Experience, Portfolio, Field Assignment, etc.

## **Lab Quizzes work** should include the following types of questions:

- Recognition Type (such as MCQs; Multiple Response; True or False; Matching; Classifying)
- Recall Type – Filling Blanks (One word / Phrase Answers)



**Students visited the National Center for Skill Development & Entrepreneurship**

## Scheme for The Distribution of Marks in Internal & External Evaluation of Vocational Courses

Scheme for Vocational Courses (Under NEP: Only for Sem-III, IV & V students) (w.e.f. 2022-23 & onwards)						
Internal Assessment Modes for Vocational Courses of FOUR (04) credits						
	Distribution of Credits & Marks					
	4 TH	3 TH + 1 P/T/W@, etc.	1 TH + 3 P/T/W@, etc.			
	Internal - 40 % (40 marks) External - 60 % (60 marks)		Internal - 50 % (50 marks) External - 50 % (50 marks)			
	Theory (4Cr)	Theory (3Cr)	P/T/W (1Cr)	Theory (1Cr)	P/T/W (3Cr)	
1. Class Tests# ( <i>best 2 out of 3</i> )	2×10 marks	2×10 marks	No internals in the Practical/Training/Workshop part	No internals in theory part	Lab work assessment\$ ( <i>best 2 out of 3</i> )	2×13 marks
2. Any one of the following: • Quizzes/Objective Tests ## ( <i>best 1 out of 2</i> ) • Group Tasks ( <i>Group Discussion / Fishbowl Technique / Role-Play / Authentic-Problem Solving, etc</i> )	08 marks	08 marks			Viva-Voce/ Lab Quiz\$\$ ( <i>best 2 out of 3</i> )	2×10 marks
3. Any one of the following: • Home Assignments ( <i>followed by presentation</i> ) • Class Assignments • Class-Teaching • Poster Presentations • Portfolios • Annotated Bibliographies* • Reports* • Book Review* • Article Review* • Journal Writing* • Paper Presentations* • Seminar* • Field Assignments*	08 marks	08 marks				
* <i>For Advance-Learner students</i>						
4. Attendance - • 75% - 80% : 01 marks • 80% - 85% : 02 marks • 85% - 90% : 03 marks • 90% & above: 04 marks	04 marks	04 marks			Attendance - • 75-80%: 01 marks • 80-85%: 02 marks • 85-90%: 03 marks • > 90% : 04 marks	04 marks
<b>Total of Internal Evaluation:</b>	40 marks	40 marks			<b>Total of Internal Evaluation:</b>	50 marks
<b>External Evaluation</b> ( <i>End of Semester</i> )	60 marks	60 marks	100 marks*		<b>External Evaluation</b> ( <i>End of Semester</i> )	50 marks
<b>Total Marks:</b>	<b>100 Marks</b>	<b>100 Marks</b>	<b>100 Marks</b>			<b>100 Marks</b>

@ P = Practical, T = Training, W = Workshop

\* Modes/Scheme of evaluation to be decided by the concerned BOS/Chairmen of BOS.

### Abbreviations & their descriptions

# Various options for conducting Class Tests are as follows:

- Lab work assessment
- Self-Test / Online Test
- Lab work assignment on *vlab.co.in*
- Open-Book/Open-Notes Tests/Class-Assignments
- Essay/Article Writing
- Case Studies (*For Advance-Learner students*)

**## Quizzes/Objective Tests should include the following types of questions:**

- Recognition Type (*such as MCQs; Multiple Response; True or False; Matching; Classifying*)
- Recall Type - Filling Blanks (*One word / Phrase Answers*)

**\$ Lab work assessment should include Laboratory work, Computer simulations / Virtual Laboratories, Craftwork, Work Experience, Portfolio, Field Assignments, etc.**

**\$\$ Lab Quizzes should include the following types of questions:**

- Recognition Type (*such as MCQs; Multiple Response; True or False; Matching; Classifying*)
- Recall Type - Filling Blanks (*One word / Phrase Answers*)

=====

**SCHEME DESIGNED AS PER THE CENTRALIZED ORDINANCE NO. 14-A ISSUED BY DHE  
(Semester System-NEP)**

**16.7** If a student obtains an F or Ab grade in any course(s), He/she will be treated as having failed in the course(s). His/her has to reappear in the examinations of that course(s) conducted by the University/UTD/Autonomous college Marks obtained earlier in continuous assessment may be carried forward and added to the marks obtained in repeat semester-end examination to decide the grade in the repeat course(s)

**16.8** “The student will be promoted to the next semester if he/she secures at least half of the total credits in a semester. In case the student secures less than half of the total credits in any semester, then the student will be declared fail in that semester and he/she will be asked to repeat the entire semester and that semester will be treated as zero semester, in such case the student will not be promoted to the next semester.

If a student passes all the courses offered in any semester, then the student will be declared passed in that semester. If a student secures at least half of the total credits in a semester and fails in some courses offered in that semester then he/she will be provisionally promoted to the next semester with ATKT (Allowed To Keep Term) in those courses in which he/she fails.

If the student fails to pass all the courses in the next ATKT examination the provisional promotion will be terminated but he or she will be given a second chance to pass the failed course. Suppose that the student does not complete the concerned semester even after the aforesaid second chance. In that case, she/he shall be treated as a fail in that semester and will be asked to repeat the entire semester and that semester will be treated as zero semester.”

**16.9** Repetition of a theory/practical course is allowed only to those candidates who get an F (Fail) or Ab (Absent) grade in the course or have failed in the semester. The student has to pay the prescribed fee for repeating the course.

**16.10** On account of valid reasons, a student may withdraw from a semester. In such a case, that semester will be treated as zero semester.

**16.11** In case of zero semester, the student will not be promoted to the next semester till he/she clears that semester. The University may allow such a student to re-regular in that semester in the coming semesters. The student has to pay the semester fee again in such a case and may not be eligible for



scholarships. If the student withdraws within one month from starting the academic semester the semester fee will not be charged again.

**16.13** The theoretical and practical courses can be repeated whenever offered or conducted by the University/UTD/Autonomous college but within the maximum duration of the program He/she can avail multiple repeat attempts to pass the course.

- The cost of lost books of the library and any other damages incurred would be recovered from the caution money.
- Railway concession facility may be availed by the student for visiting the home town (native place of the student or the place where his/her parents/guardian reside) during the vacation. The certificate for Railway concession is valid for 14 days from the date of issue for the outward journey and four months for the return journey. A separate order will be issued for each journey.
- Migration certificate will be issued by Barkatullah University, Bhopal on payment of a fee prescribed by the University.
- Duplicate TC/Mark sheet/Identity Card can be obtained on payment of Rs. 100/-.
- Additional certificates demanded by the students will be given at a fee of Rs 50/-

### **Instruction for obtaining Exit documents**

- For various documents/certificates required from the Institute students should submit their application in the office in the appropriate form along with all essential enclosures/documents to ensure prompt disposal of their cases. Ordinarily, the applied document/certificate will be issued by the office on the third working day after the submission of the application.
- For obtaining a **refund of caution money** and Transfer Certificate, the application must be submitted in the prescribed proforma. Identify Card, original fee receipt, and no dues certificate should be enclosed along with the application for refund of caution money. Mid-term quitters can obtain a refund of the caution money by applying the prescribed proforma.

### **FACILITIES**

#### **• Infrastructure**

The Institute has a huge campus spreading over 28.97 acres situated in a lush green valley adjacent to WALMI Hills, Bhopal. The Institute constantly thrives for excellence in the teaching-learning process through technologically advanced classrooms, Laboratories, Multipurpose Halls, an e-content Development room, a Placement Cell, Incubation Center, Research Centres, and a separate block for vocational courses. As the campus is wifi enabled, teachers and students use institutional and personal IT resources in classrooms.

In the teaching-learning process, the Institute portal ([www.iehe.ac.in](http://www.iehe.ac.in)) plays an important role for various purposes, like attempting class tests, surveys, and quizzes; viewing or downloading upcoming events, syllabi, timetables, old question papers, study material, etc. Three multipurpose halls are used for different academic and cultural activities held throughout the year. The Institute has an immense sports complex and a newly constructed small Administrative Block suited to

our diverse needs. The examination block, well equipped with high-tech instruments, and having separate compartments, and windows for student interactions and queries, maintains the confidentiality of the cell.

- **Administration through IT-enabled services**

To maintain the academic and administrative services of the Institute, the IT cell developed a complete Institute Management System.

Servers	Computer Systems	Notebooks	Smartboards	Projectors	Visualisers	Interactive Panels
Video Conferencing System	Media Centre	Lecture Capturing System	Multifunction Laser Printers	Photocopiers	High Speed Laser Printers	Color Laser Printers
Document Scanner	ID Card Printer	CCTV Surveillance	Firewall Protection	Central Computer Lab	Language Lab	Web Camera
Handicams	Digital Cameras	Microsoft Licensd Software	NVDA Software	Softwares for Editing	Software for OMR Checking	Barcode Reader
FTTH Connection	Optical Fibre Network	LED TV	LED Display Board	Lecturn	E-Podium	Online UPS
Roombr	Antiviruses	Smartphones	Mixing Instruments	Amplifiers	Biometric / Face Recognition System	

The ICT cell is the lifeline of the Institute and is responsible for providing IT facilities and maintenance of the Institute. A central computer lab runs with the ICT cell. It has sufficient infrastructure and computing equipment. Overhead projectors have been replaced by DLP and LCD projectors with cutting-edge visualization at the Institute. Microsoft Licensed Software MS TEAMS and Office-365 are purchased for students and faculty. NVDA software is used which helps visually challenged students in the field of learning and is updated regularly.

To augment the Internet facility, we have a Wi-Fi connection. For prohibition and authentic use of the internet, we have a security system Firewall, that protects against unwanted and unauthenticated access. We have antivirus software for computers through which computers are protected against harmful viruses. These antivirus programs are installed on different computers throughout the Institute. For security purposes, our Institute has online surveillance with more than 180 security cameras.

- **SWAYAM – NPTEL Local Chapter**

- NPTEL courses provide students and faculty a platform to update their knowledge by listening to the lectures delivered by the faculty of IITs /IISc and getting certified by participating in online courses and assessments. As the result of hard work and dedication, our Local Chapter has been graded “A” and placed at 59 positions among 1800+Local Chapters nationwide in July 2018. In the following years, the institute was graded as an “Active Local Chapter”

- **Incubation Center**

“UDGAM” Incubation Centre of Institute for Excellence in Higher Education, Bhopal promotes and motivates entrepreneurial activities among the students. ‘Udgam’ Incubation Centre and Entrepreneurial Cell works with a motive to promote a culture of equality and equity in the entrepreneurial world. Our prime focus is to nurture young aspiring minds and create a culture and ecosystem for startups/Entrepreneurship. Our supreme objective is to promote innovative ideas and to help them become a reality. We believe that each idea has the potential to bring change if provided with the needed support. The ‘Udgam’ Incubation Centre provides **seed money of Rs. 1 lakh** every year to the students of IEHE to support their unique and innovative ideas, which plays a crucial role in nurturing and supporting start-ups.

**Activities:** ‘Udgam’ Incubation Centre has conducted various orientation programs/ seminars/ workshops for spreading awareness among students for Start-ups/ Entrepreneurship in collaboration with **IISER, Bhopal, ATAL Incubation Centre-RNTU Foundation, IIT, Mumbai, Savishkar India**, etc.

**Achievements:** Students of IEHE represented the “Udgam” Incubation Centre in the National Entrepreneurship Challenge (NEC) held at **IIT, Mumbai** on 28<sup>th</sup> & 29<sup>th</sup> January 2023 and secured sixth position in the competition, which is a very big achievement for the Institute.



The students participating in the two days event of UDGAM



The students sharing their ideas with the NAAC Peer Team

**Note:** Students who have any unique idea and/or are interested in starting their Startup/ Entrepreneurship can register in the student’s E-Cell Committee and can participate in various Entrepreneurial activities.



## • LIBRARY

### Library Facilities and Services

- The new digital state-of-the-art library is equipped with over about 36000 books on different subjects and subscribes to several periodicals, national/state newspapers (12), magazines (13) and journals (21), e-journals (13), e-books (63) books on self-development and motivation besides an extensive array of reference material and books on competitive exams, unsolved papers and answer books of paper wise toppers of the Institute.
- An Internet Zone is functional to enable the students to avail of membership of the 'National Library and Information Services Infrastructure for Scholarly Content'(N-list). The N-list program provides excess to more than 2100 e-journals and more than 55100 e-books.
- Remote access: Web OPAC <http://117.217.123.132/>
- The library has a web portal to provide all digital and electronic resources in one platform to facilitate the academic community. <http://117.217.123.132:8001/cgi-bin/koha/opac-main.pl>



## HOSTEL

- There are 107-seated girls-hostel and 100-seated boys-hostel in the Institute campus to house outstation students.
- Only girls/boys students residing outside Bhopal will be eligible for admission in the hostel.
- The students desirous of admission have to apply in the prescribed form.
- Admission will be granted on a merit basis and in compliance with reservation rules/ policy of the State Government.
- Students admitted to the hostel will be required to pay the hostel fee as given in the prospectus. In case a student leaves the hostel in the middle of the session fees will not be refunded.
- A Hostel mess (Boys/Girls) is functional around the academic year and mandates a compulsory membership of all the hostellers.
- All the new first-year students (session 2024-25) who are admitted in the hostel will have to pay the Mess fees (Boys/Girls) as applicable for the entire semester (for six months) in advance.
- Hostel inmates (Girls/Boys) who qualify for the MMVY Scholarship will not have to pay the hostel fee at the time of admission. However, if they fail to avail MMVY scholarship they have to clear all dues related to the hostel.

- All the hostellers are required to pay the caution money at the time of admission.
- All the refundable amounts and dues shall be adjusted at the end of the semester.
- For overall supervision of the hostel, a hostel management committee is constituted every year under the senior Professor of the Institute. The superintendent of the hostel, Prof. In charge of Mess and Hostel Manager constitute the committee.
- Hostellers have to abide by the rules and regulations given in the hostel prospectus.
- Regular visits by a lady doctor for a routine checkup of inmates of the girl's hostel.
- Regular morning YOGA class is compulsory for all the hostellers.
- In keeping with the objectives of UGC for the empowerment of women and in compliance with the directives of the state government for skill development among hostel girls the Institute has introduced a **100% practical training-oriented 900 hours course Hostel Management**. The curriculum includes training programs on Horticulture, traditional arts, and crafts, etc. in addition to the management module. In the first year the Hostel girls will be entitled to a Certificate in Hostel Management (**CHM**), in the second year to a Diploma in Hostel Management (**DHM**), and on the completion of the third year they will be entitled to a P.G. Diploma in Hostel Management (**P.G.D.H.M.**) It is an innovation that is the first of its kind in India which will be helpful to the students in their future life.

## • **SCHOLARSHIPS**

### **Student Welfare Scholarships**

The Institute offers two kinds of Scholarships:

- (a) Institutional Scholarships & Awards
- (b) Government Scholarships

#### **(a) Institutional Scholarships & Awards:**

##### **(i) Merit-cum-means Scholarships**

Rs. 5,000 per student whose parent's income is less than Rs.1,50,000 (*20 applicants in order of Merit*).

##### **(ii) Economic Assistance**

Rs. 5,000 per student whose parent's income is less than Rs.1,50,000 (*20 applicants in order of Merit*).

##### **(iii) Merit Award:** This award can be given with any other scholarship -

Rs 2,000 for Major subject classes faculty toppers of Undergraduate, Postgraduate & M.Phil. Students.

##### **(iv) Dr. N.P. Singh Memorial Award** of Rs. 5000/- per annum for faculty-wise three applicants (in order of merit) whose parent's income is less than 3.6 lacs per annum, and the student is not getting any other scholarship or economic assistance from any other source.

#### **(b) Government Scholarships/Yojna:**

- i. **Mukhyamantri Medhavi Vidhyarthi Yojna (MMVY)** – Scholarship scheme for meritorious students of the 12<sup>th</sup> class of Madhya Pradesh.
- ii. **Mukhyamantri Jankalyan Yojna (MMJKY)** – This Scholarship is given to those students whose parents are Sambal Yojna cardholders of Madhya Pradesh Domicile.
- iii. **Gaon ki Beti Yojna** (Rs. 5,000/- per annum per girl applicant) only for those students who have passed the Higher Secondary examination from the school situated in a rural area / Gram Panchayat

/ Janpad Panchayat. It will be given for three years to eligible students who will mandatorily apply in 1<sup>st</sup> year. Renewal will take place in the 2<sup>nd</sup> & 3<sup>rd</sup> year after submission of the forms. This scholarship can be given with any other scholarship.

- iv. **Pratibha Kiran Yojna** (Rs. 5,000/- per annum per girl applicant) Eligibility – 1<sup>st</sup> division in class 12<sup>th</sup>, BPL category, school from an urban area it will be given for three years to eligible students who apply in 1<sup>st</sup> year of course. Renewal will take place in the 2<sup>nd</sup> & 3<sup>rd</sup> year after submission of the forms.
- v. **Nishakt Jan Scholarship** funded by *Samajik Nyay Vibhag* (Rs 200/- per month per boy/girl applicant admitted to computer/Management Courses for M.P. domicile and parent income up to Rs. 1 lakh.
- vi. **Post Metric Scholarship** for SC/ST/ OBC Minority and Nishakht, Ghumakkar students.
- vii. **Awasiya Yojna** funded by Adim Jati Kalyan Vibhag (Rs 2000/- per month for SC/ST students)

#### **Note**

- (1) *Govt. Scholarships will be given as per Govt. rules. Application Forms will be available on the website of Scholarship Portal 2.0 can download forms and submit them.*
- (2) *Students will be eligible for only one scholarship among all categories except Gaon ki Beti Yojna, and Avagaman Bhatta.*

## **• RESEARCH**

The Institute has a Research-Development-Cell and a Research-Ethics-Cell, chaired by the Director, which monitor all the research activities. Well-defined 'Research-Policy' and 'Code of Conduct' for research-oriented events serve as a guideline for research activities. An IPR policy has been formulated to spread awareness about the need and significance of IPR and further promote the practice amongst the stakeholders. More than 50% of PG departments have recognized research centers

### **Research Funding for students**

Intending to promote research, the Institute provides financial assistance to students who wish to participate in National Seminars/Conferences. The academic council acts as a nodal agency to which the applicants have to apply in a duly filled application form along with a copy of the accepted research paper forwarded by the concerned Head of the department at least 10 days before the scheduled date of the conference/seminar. The details for obtaining research funds are as follows:

- Candidates found eligible (faculty-wise) will be entitled to financial assistance for the Presentation of papers in the seminar. Preference will be given to Postgraduate students.
- Students can avail the financial assistance only once during an academic session.
- Students are entitled to a reimbursement of a maximum amount of Rs.1000/- as registration fee.
- Daily allowance and traveling allowance will be payable as per the rates approved by the Executive Committee, which are as follows:
  - At the local level – Rs. 100/- per day
  - For Seminar/Conference within the state and outside the state
  - Rs. 200/- per day with boarding facility
  - Rs 300/- per day without boarding facility



- The rate of daily allowance or the actual expenses, whichever is lower will be payable. Students will be entitled to the rail fare of IIInd Class Sleeper/Non-AC bus fare. Daily allowance will include local conveyance allowance also.
- Applicants will not be entitled to any kind of advance. Payments will be made only for the sanctioned amount on the submission of relevant vouchers.

## STUDENTS SUPPORT SERVICES

- **Awards & Medals** are instituted to incentivize academics, sports, and talents. The **Director's Medal** is awarded to deserving students in the final year of undergraduate degree courses based on academic, sports, co-curricular, and extra-curricular activities. Toppers in each faculty and outstanding students with distinctive performance in academics, Sports, General knowledge, *etc* are honored with faculty-sponsored **Memorial Medals** during the Degree Distribution Programme.
- **Training & Placement Cell** - The Training & Placement Cell (T&P Cell) of the Institute for Excellence in Higher Education plays a pivotal role in bridging the gap between academia and industry. Our mission is to empower students with the necessary skills and knowledge to excel in the professional world, while also assisting them in securing placements in reputable organizations. The past year has been marked by significant achievements and milestones for our T&P Cell.

**Industry Collaborations:** IEHE has strategic partnerships with leading companies across various sectors to facilitate internships, training programs, and placement opportunities for our students. Some of the Partnering firms include Ernst & Young, Proctor and Gamble, Corizo, Intellipat, Pocket FM, Securitas India, Magnik India, magnet brains, Edukon, rapidop British Telecom, planet spark, signific careers Flipkart, agile capital services, codeyoung, Byju's, BNM business solutions Hindustan Coca-Cola beverages, Ecoholics, Amazon, TCS, Accenture innovation, IGT solutions, explore, Tata administrative services TAS and many more.

**Skill Development Initiatives:** The T&P Cell organized numerous workshops, seminars, and training sessions focused on enhancing students' soft skills, technical competencies, and employability. Special emphasis was placed on communication skills, problem-solving abilities, and leadership development.

- *PAN card Drive in March 2023.*
- *Soft Skill Development Workshops*
- *Advanced Excel Workshops*
- *Introduction of specialized training programs in emerging technologies and industry-specific domains like AI, ML, and Coding*

**Placement Drives:** Throughout the year, we conducted several placement drives both on-campus and virtually, inviting renowned companies to recruit our talented students. In the current year, T&C Cell has started with the initiative of “**Seamless Saturdays**” which is an initiative for a systematic and more effective way to have an Internship & placement drive in

the Institution. Recent Placement includes Proctor and Gamble, Corizo, Intellipat, Code Young, Byju's, BNM business solutions, Ecoholics, TCS, Insplore, and Magnet Brain.

- **A Group Insurance Scheme** has existed for students of the Institute since session 2005-2006. The scheme covers all the students for accidental treatment and risks to the lives of the students and guardians. The Insurance Scheme is currently provided by **the United Insurance Company Ltd.** Details about the Group Insurance Scheme can be obtained from the Institute's Office.
- **Grievance & Redressal Cell** receives suggestions or complaints from the students as well as the parents, to effectuate improvements in every segment of administration. For this purpose, a complaint/suggestion box is installed. The redressal committee regularly reviews them for prompt action.
- **Women Counseling Cell** provides guidance regarding academic and job-oriented schemes to female students, conducts various awareness activities & organizes lectures and talks to disseminate information on social issues such as violence against women, creating awareness regarding women's rights, etc.
- **An Online Tutor-Guardian Scheme** exists to keep a record of the progress, problems, or any other difficulty that the student might have. Parents are required to register on the Institutes portal which enables them to be attentive to the progress of their wards.
- **Educational Excursions** are organized for different parts of the country during the semester breaks.
- **Alumni and Parent Association** The Alumni Association is the treasure trove of the Institute's human resources which generates an active, supportive, and collaborative alumni network that is pivotal to the institute's development and strives to foster a strong relationship since 2001. Our alumni are associated with premier organizations of national and international fame by offering career guidance to the Institute's junior aspirants. They remain connected by way of active participation in Tarang Fest and Degree. The registered Alumni Society also holds an active PAN number. <https://www.iehe.ac.in/Alumni/AlumniHome.aspx> Distribution ceremony which is the most coveted program for alumni.
- **Clubs** like Literary Club, Current Events Club, Cultural Activities Club, Nature & Adventure Club, Social Service Club, Sports Club, Economics Club, etc are functional and students are required to be members of at least one club.

## Cultural Activities

Cultural activities not only enrich the academic experience of the students but play a vital role in the holistic development of students equipping them with essential skills and qualities for success in both personal and professional life.

- **TARANG**

Every year, a structured committee led by students under the guidance of our staff organizes the most awaited cultural event of our institution - 'TARANG', which symbolizes a happy amalgam of our diverse cultural roots. Tarang Fest encompasses on-stage events such as mime, drama, solo and group classical dance, and solo and group songs. It also includes various off-stage events such as face painting, clay modeling, poetry and creative writing, debates, and painting competitions. Social and cultural activities have given a platform for young students from across the state, including villages to display their craftsmanship while also allowing them to explore new dimensions of creativity. The last day of Tarang is a much-awaited occasion for students to self-display the traditional outfits and is a sight to behold, for it richly represents India's diverse cultural and clothing heritage

- **Academic Festival** is a milestone event that facilitates 'out of the box learning'. The event spurs and initiates interest in the subject thereby mitigating the boredom of stereotyped learning. Through multifarious subject-based activities and events, the festival offers a platform for the students to showcase their talents besides arousing their creative sensibilities and innovative abilities. It also prompts informal interaction between students, faculty & staff.
- **Freshers/ Farewell Parties** mark the beginning and end of a student's chapter. Both celebrate transitions, growth, and the ever-changing journey of life.
- **Co-curricular activities** and extra-curricular activities are spread over the entire academic calendar. Debates, quizzes, seminars, and other cultural activities help to bring out the innate talents of the students. The Annual function offers a cultural bonanza to the students and provides them a forum to exhibit and chisel their talents. Sports and adventure activities are regularly conducted before the annual functions.
- **Institute Magazine and Newsletter** chronicles the cultural, academic, and overall activities of the Institute. Literary articles from the faculty and the students are an outstanding feature of the magazine. Departmental Newsletters update the activities of the Departments.
- **Parking Facility** Parking slots for students and faculty have been upgraded and increased to accommodate the growing numbers. Students are facilitated to use parking spaces and are instructed to use helmets compulsorily.
- **Canteen/Nescafe Facility** A canteen for students and staff and a mess facility for hostellers are available within the campus.





- **Lift Resources** To promote inclusivity a lift facility is installed in the New Building (Aarybhatt Bhwan) on the Institute campus which is accessible to all students and staff.
- **Photocopy Shop** The kiosk stocks a diverse selection of stationery items catering to the different needs and preferences of the students and staff.
- **Health Centre** The Institute Health Center provides essential medical services to the students and faculties promoting their well-being and supporting academic success.



**Free Health Checkup Camp organized by AAROGYAM Club**

## OTHER HIGHLIGHTS

- The **Internal Quality Assurance Cell (IQAC)** played a pivotal role in securing the **A+ grade** for our Institute. The IQAC is responsible for planning, guiding, and monitoring quality assurance and enhancement initiatives within the institution. Its efforts have fostered a culture of excellence, providing students with enhanced learning opportunities and broadening their creative horizons.
- **NSS**  
Students have to render 120 hours of community service to be eligible for certification. NSS camps and other projects instill a sense of social responsibility and a feeling of community service among the students. The NSS is marked by multifarious activities viz. Campus Plantation, AIDS Awareness Rally, Enactment of Message Street Plays on Social Issues of Common Concern, Free Distribution of Stationery Kit, Collaborative Training Programmes with Placement Cells, Visits to Old Age Home, Cleanliness drives, Workshops, and Short duration Camps, Voluntary Blood Donation Camps, etc.
- **NCC**  
The Army wing exists in the Institute which has a total strength of 107 cadets. The Institute is proud to announce that the cadets of the Institute participate in Republic Day Camps, the International Youth Exchange Program, and other major events of repute respectively.

### Academic Calendar for the Session 2024-25

#### (A) All Classes: ODD Semesters

1.	Academic Session (Including Examination)	1 <sup>st</sup> July 2024 – 14 <sup>th</sup> December 2024
2.	Academic Fest	13 <sup>th</sup> & 14 <sup>th</sup> September 2024
3.	Practical Examination ( <i>for all practical courses</i> )	04 <sup>th</sup> November 2024 to 14 <sup>th</sup> November 2024
4.	Last teaching day ( <i>for all classes</i> )	14 <sup>th</sup> November 2024
5.	Deepawali Vacation ( <i>for Staff &amp; Students</i> )	28 <sup>th</sup> October 2024 to 02 <sup>nd</sup> November 2024
6.	Preparation Leave ( <i>for all classes</i> )	16 <sup>th</sup> November 2024 to 19 <sup>th</sup> November 2024
7.	<b>Semester Examination</b>	<div> <div> (i) UG Sem-I (Regular)  (ii) UG Sem-III (Regular &amp; ATKT)  (iii) UG Sem-V (Regular &amp; ATKT)  (iv) PG Sem-I &amp; III (Regular)  ATKT of Ex-students (Non NEP) </div> <div>20<sup>th</sup> November 2024 to 14<sup>th</sup> December 2024</div> </div>
<b>Note:</b> Total teaching days including preparation leave in the odd semester is <b>103 days</b>		
8.	Results (All Classes)	25 <sup>th</sup> January 2025 at 04:00 pm
9.	Semester Break	16 <sup>th</sup> December 2024 to 26 <sup>th</sup> December 2024

#### (B) All Classes: EVEN Semesters

1.	Academic Session (Including Examination)	<b>27<sup>th</sup> December 2024 – 24<sup>th</sup> May 2025</b>
2.	Annual Function: Sports and Cultural Fest (4 days)	12 <sup>th</sup> February 2025 to 15 <sup>th</sup> February 2025
3.	Practical Examination ( <i>for all practical courses</i> )	14 <sup>th</sup> April 2025 to 26 <sup>th</sup> April 2024
4.	Last teaching day ( <i>for all classes</i> )	26 <sup>th</sup> April 2025
5.	Preparation Leave ( <i>for all classes</i> )	26 <sup>th</sup> April 2025 to 30 <sup>th</sup> April 2025
6.	<b>Semester Examination</b>	<div> <div> (i) UG Sem-II (Regular)  (ii) UG Sem-IV (Regular &amp; ATKT)  (iii) UG Sem-VI (Regular)  (iv) PG Sem-II &amp; IV (Regular &amp; ATKT)  ATKT of PG Sem-I (<i>for PG Sem-II students only</i>)  ATKT of PG Sem-II &amp; III (<i>for PG Sem-IV students only</i>)  ATKT (<i>for Ex-Students</i>) (Non-NEP)  Vocational Courses </div> <div>01<sup>st</sup> May 2025 to 24<sup>th</sup> May 2025</div> </div> <div>26<sup>th</sup> May 2025 onwards</div>
7.	<b>Result</b>	<div> <div>UG: Sem-VI only (Regular &amp; ATKT of Sem- IV)</div> <div>20<sup>th</sup> June 2025 at 04:00 pm</div> </div> <div> <div>UG &amp; PG: Sem-II &amp; IV and All ATKT &amp; Vocational Courses</div> <div>30<sup>th</sup> June 2025 at 04:00 pm</div> </div>
<b>Note:</b> Total teaching days including preparation leave in the Even semester is <b>94 days</b> . ( <i>excluding 4 days for Sports &amp; Cultural fest</i> ).		
8.	<b>Summer Vacation</b>	<div>(i) 26<sup>th</sup> May 2025 – 23<sup>rd</sup> June 2025 (<i>for faculty only</i>)</div> <div>(ii) 26<sup>th</sup> May 2025 – 30<sup>th</sup> June 2025 (<i>for students only</i>)</div>
9.	Special ATKT examination for outgoing students only	Third week of July 2025
10.	Academic Session 2025-2026 will commence from	01 <sup>st</sup> July 2025

**FEE STRUCTURE (2024-25)****Fees at Glance for Newly Admitted Students (Yearly)****(Amount in Rs.)**

<b>COURSES</b>	<b>For INDIAN Students</b>	<b>For NRI / Foreign Students</b>
<b>Undergraduate Courses</b>		
<b>B.A.</b>		
<b>Major:</b> Economics <b>Minor:</b> Management/ English Literature/ Political Science/ Mathematics/ History/ Hindi Literature/ Sociology <b>DSE:</b> Economics	20182/-	99660/-
<b>Major:</b> English Literature <b>Minor:</b> Economics/ History/ Political Science / Sociology/ Hindi Literature <b>DSE:</b> English Literature	20182/-	99660/-
<b>Major:</b> History <b>Minor:</b> Economics/ Political Science/ Sociology/ English Literature/ Hindi Literature <b>DSE:</b> History	20182/-	99660/-
<b>Major:</b> Hindi Literature <b>Minor:</b> Economics/ Political Science/ Sociology/ English Literature/ History <b>DSE:</b> Hindi Literature	20182/-	99660/-
<b>Major:</b> Political Science <b>Minor:</b> Economics/ History/ English Literature/ Sociology/Hindi Literature <b>DSE:</b> Political Science	20182/-	99660/-
<b>Major:</b> Sociology <b>Minor:</b> History/ Political Science/ Economics/ English Literature/ Hindi Literature <b>DSE:</b> Sociology	20182/-	99660/-
<b>Major:</b> Economics/ English Literature/ Political Science/History/ Hindi Literature/ Sociology <b>Minor:</b> Psychology/Geography	21582/-	106660/-
<b>Major:</b> Psychology/Geography <b>Minor:</b> Economics/ English Literature/ Political Science/History/ Hindi Literature/ Sociology <b>DSE:</b> Psychology/Geography	22982/-	113660/-
<b>Major:</b> Psychology/Geography <b>Minor:</b> Geography/ Psychology <b>DSE:</b> Psychology/Geography	24382/-	120660/-
<b>Major:</b> Fashion Designing <b>Minor:</b> Management/ English Literature/ Political Science/ History/ Hindi Literature/ Sociology <b>DSE:</b> Fashion Designing	39232/-	194910/-
<b>Major:</b> Fashion Designing <b>Minor:</b> Psychology/Geography <b>DSE:</b> Fashion Designing	40032/-	198910/-
<b>Major:</b> Psychology <b>Minor:</b> Fashion Designing <b>DSE:</b> Psychology	29959/-	148545/-
<b>Major:</b> Economics/ English Lit. <b>Minor:</b> Fashion Designing <b>DSE:</b> Economics/ English Lit.	28242/-	139960/-

<b>B.Sc.</b>		
<b>Major:</b> Mathematics <b>Minor:</b> Electronics/ Computer Science/ Physics/ Chemistry/ Forensic Science/ Geography/ Clinical Nutrition and Dietetics <b>DSE:</b> Mathematics	24582/-	121660/-
<b>Major:</b> Physics/ Chemistry/ Computer Science/ Electronics/ Geography/ Clinical Nutrition and Dietetics <b>Minor:</b> Mathematics <b>DSE:</b> Physics/ Chemistry/ Computer Science/ Electronics/ Geography/ Clinical Nutrition and Dietetics	25982/-	128660/-
<b>Major:</b> Chemistry <b>Minor:</b> Forensic Science/ Biotechnology/ Food Science & Quality Control/ Computer Science/ Geography/ Clinical Nutrition and Dietetics <b>DSE:</b> Chemistry	27382/-	135660/-
<b>Major:</b> Geography <b>Minor:</b> Physics/ Electronics/ Computer Science/ Mathematics/ Chemistry/ Forensic Science/ Clinical Nutrition and Dietetics <b>DSE:</b> Geography	27382/-	135660/-
<b>Major:</b> Biotechnology <b>Minor:</b> Chemistry/ Forensic Science/ Food Science & Quality Control/ Computer Science/ Clinical Nutrition and Dietetics <b>DSE:</b> Biotechnology	48082/-	239160/-
<b>Major:</b> Forensic Science <b>Minor:</b> Chemistry/ Biotechnology/ Food Science & Quality Control/ Computer Science/ Clinical Nutrition and Dietetics <b>DSE:</b> Forensic Science	48082/-	239160/-
<b>B.Com.</b>		
<b>Major:</b> Accounting <b>Minor:</b> Management <b>DSE:</b> Accounting	20182/-	99660/-
<b>B.B.A.</b>		
<b>Major:</b> Business Management <b>Minor:</b> Business Accounting	33382/-	165660/-
<b>B.P.E.S.</b>		
<b>Major:</b> Physical Education <b>Minor:</b> Human Anatomy	24382/-	120660/-
<b>Postgraduate Courses</b>		
<b>M.A./ M.Com./ M.Sc. Mathematics</b>	24057/-	119035/-
<b>M.A. Psychology</b>	31077/-	153785/-
<b>M.Sc. Physics/ Chemistry/ Biotechnology</b>	34007/-	168785/-

#### नोट –

- उपरोक्त शुल्क दोनों सेमेस्टर के लिये देय होगा।
- पेमेंट सीट का शुल्क विदेशी/अप्रवासी भारतीयों के शुल्क के बराबर ही होगा।
- ऐसे विद्यार्थी जिन्होंने सी.बी.एस.ई. या अन्य बोर्ड से 12वीं की परीक्षा उत्तीर्ण की है वे उक्त शुल्क के साथ माईग्रेशन शुल्क रुपये 165/- जोड़कर जमा करेंगे।
- स्नातकोत्तर पाठ्यक्रम के ऐसे विद्यार्थी जिन्होंने बरकतउल्ला विश्वविद्यालय के अतिरिक्त म.प्र. राज्य के किसी अन्य विश्वविद्यालय से स्नातक की उपाधि प्राप्त की है, उन्हें उक्त शुल्क के साथ नामांकन शुल्क रुपये 130/- तथा म.प्र. राज्य के बाहर के किसी विश्वविद्यालय से स्नातक की उपाधि प्राप्त की है, वे उक्त शुल्क के साथ नामांकन शुल्क रुपये 295/- जोड़कर जमा करेंगे।
- उपरोक्त शुल्क में विश्वविद्यालय शुल्क एवं अवधान शुल्क (कॉशन मनी) भी सम्मिलित है।
- पेमेंट सीट पर इस वर्ष (2024-25) में प्रवेश लेने वाले विद्यार्थी को आगामी प्रत्येक वर्ष में भी पेमेंट सीट के सामने दर्शायी गई फीस जमा करनी होगी।
- शुल्क संरचना में परिवर्तन करने (किसी भी तरह) की सूचना, संस्थान के पोर्टल पर दी जावेगी।



**FEE STRUCTURE 2024-25****Headwise Fee for Undergraduate Courses****(Except Biotechnology/Fashion Designing)****(Amount in Rs.)**

Head of Fee	Indian Students (Amount)	NRI & Foreign Students/Payment Seats (Amount)
	Annual Fee	Annual Fee
<b>A- Non-Refundable Fee</b> (Semester I/III/V/VII)		
<b>I- Academic Fee:</b>		
Admission/Re-admission Fee	800	4000
Tuition Fee	6000	30000
Library Fee (Including Reading Room & Magazine)	1350	6750
Co-Curricular and Extra-Curricular Fee	1600	8000
Student Welfare Fee	1182	5910
Personality Development Test Fee	500	2500
<i>Laboratory Fees:</i>		
All Hons. Subjects	1200	6000
All Subs. Subjects	600	3000
<b>II- Examination Fee:</b>		
Examination Fee (Theory)	4500	22500
Examination Fee (per practical)	800	2000
Development Fee	2000	10000
University Fees/Portal Charges (only for first-year students)	250	250
<b>B- Refundable (Caution Money)*</b>		
Science	5000	25000
Arts & Commerce	2000	10000

**Note:**

\*The above fee structure is subject to change as per the decision of the General Body of the Institute.

\*Caution Money will be in addition to the total non-refundable amount.

\*The cost of lost books of the library and any other damages incurred would be recovered from caution money.

**FEE STRUCTURE 2024-25****Headwise Fee for Undergraduate Courses****B.Sc. Biotechnology/ Forensic Science****(Amount in Rs.)**

Head of Fee	Indian Students (Amount)	NRI & Foreign Students/Payment Seats (Amount)
	Annual Fee	Annual Fee
<b>A - Non-Refundable Fee</b> (Semester I/III/V/VII)		
<b>I - Academic Fee:</b>		
Admission /Re-admission Fee	800	4000
Tuition Fee	24000	120000
Library Fee (Including Reading Room & Magazine)	1350	6750
Co-curricular and extra-curricular Fee	1600	8000
Student Welfare Fee	1182	5910
Personality Development Test Fee	500	2500
Laboratory Fee	4500	22500
<b>II- Examination Fees:</b>		
Examination Fee (Theory)	4500	22500
Examination Fee (Practical)	2400	12000
Development Fee	2000	10000
University Fees/Portal Charges (only for first-year students)	250	250
<b>B- Refundable (Caution Money) *</b>	<b>5000</b>	<b>25000</b>

**Note:**

\*The above fee structure is subject to change as per the decision of the General Body of the Institute.

\*Caution Money will be in addition to the total non-refundable amount.

\*The cost of lost books of the library and any other damages incurred would be recovered from the caution money.

**FEE STRUCTURE 2024-25****Headwise Fee for Undergraduate Courses****B.A. Fashion Designing****(Amount in Rs.)**

Head of Fee	Indian Students (Amount)	NRI & Foreign Students/Payment Seats (Amount)
	Annual Fee	Annual Fee
<b>A- Non-Refundable Fee</b> (Semester I/III/V/VII)		
<b>I - Academic Fee:</b>		
Admission /Re-admission Fee	800	4000
Tuition Fee	14400	72000
Library Fee (Including Reading Room & Magazine)	4000	20000
Co-curricular and extra-curricular Fee	1600	8000
Student Welfare Fee	1182	5910
Personality Development Test Fee	500	2500
Laboratory Fee	3000	15000
<b>II- Examination Fees:</b>		
Examination Fee (Theory)	4500	22500
Examination Fee (Practical)	2000	10000
<b>Development Fee</b>	2000	10000
University Fees/Portal Charges (only for first-year students)	250	250
<b>B- Refundable (Caution Money) *</b>	<b>5000</b>	<b>25000</b>

**Note:**

\*The above fee structure is subject to change as per the decision of the General Body of the Institute.

\*Caution Money will be in addition to the total non-refundable amount.

\*The cost of lost books of the library and any other damages incurred would be recovered from the caution money.

**FEE STRUCTURE 2024-25**  
**Head wise Fee for Postgraduate Courses**

M.A./M.Com./M.Sc. (Mathematics)

(Amount in Rs.)

Head of Fee	Indian Students (Amount)	NRI & Foreign Students/Payment Seats (Amount)
	Annual Fee	Annual Fee
<b>A- Non-Refundable Fee</b> (Semester I/III)		
<b>I - Academic Fee:</b>		
Admission /Re-admission Fee	800	4000
Tuition Fee	10000	50000
Library Fee (Including Reading Room & Magazine	1350	6750
Co-curricular and Extra-curricularFee	1600	8000
Student Welfare Fee	1182	5910
Personality Development Test Fee	500	2500
<b>II- Examination Fees:</b>		
Examination Fee (Theory)	4500	22500
<b>Development Fee</b>	2000	10000
University Fees/Portal Charges (only for first-year students)	250	250
<b>B-Refundable (Caution Money)*</b>	2000	10000

**Note:**

*\*The above fee structure is subject to change as per the decision of the General Body of the Institute.*

*\*Caution Money will be in addition to the total non-refundable amount.*

*\*The cost of lost books of the library and any other damages incurred would be recovered from the caution money.*



**FEE STRUCTURE 2024-25**  
**Headwise Fee for Postgraduate Courses**

M.Sc. (Biotechnology/ Physics/Chemistry)

(Amount in Rs.)

Head of Fee	Indian Students (Amount)	NRI & Foreign Students/ Payment Seats (Amount)
	Annual Fee	Annual Fee
<b>A- Non-Refundable Fee (Semester I/III)</b>		
<b>I - Academic Fee:</b>		
Admission /Re-admission Fee	800	4000
Tuition Fee	10000	50000
Library Fee (Including Reading Room& Magazine)	1800	9000
Co-curricular and extra-curricular Fee	1600	8000
Student Welfare Fee	1182	5910
Personality Development Test Fee	500	2500
Laboratory Fee	4500	22500
<b>II- Examination Fees:</b>		
Examination Fee (Theory)	4500	22500
Examination Fee (Practical)	2000	10000
<b>Development Fee</b>	2000	10000
University Fees/Portal Charges (only for first- year students)	250	250
<b>Total Non-Refundable Fee (Excluding University Fees)</b>	<b>28882</b>	<b>144410</b>
<b>B- Refundable (Caution Money)*</b>	<b>5000</b>	<b>25000</b>

**Note:**

\*The above fee structure is subject to change as per the decision of the General Body of the Institute.

\*Caution Money will be in addition to the total non-refundable amount.

\*The cost of lost books of the library and any other damages incurred would be recovered from the caution money.

**FEE STRUCTURE 2024-25****Headwise Fee for Undergraduate Courses****B.A. Economics/ English Lit./ Psychology with Fashion Designing****(Amount in Rs.)**

Head of Fee	Indian Students (Amount)	NRI & Foreign Students/Payment Seats (Amount)
	Annual Fee	Annual Fee
<b>A- Non-Refundable Fee (Semester I/III/V/VII)</b>		
<b>I - Academic Fee:</b>		
Admission /Re-admission Fee	800	4000
Tuition Fee	9190	45950
Library Fee (Including Reading Room & Magazine)	3350	16750
Co-curricular and extra-curricular Fee	1600	8000
Student Welfare Fee	1182	5910
Personality Development Test Fee	500	2500
Laboratory Fee	2700	13500
<b>II- Examination Fees:</b>		
Examination Fee (Theory)	4500	22500
Examination Fee (Practical for Psychology)#	2600	13000
Examination Fee (Practical)	1000	5000
<b>Development Fee</b>	2000	10000
University Fees/Portal Charges (only for first-year students)	250	250
<b>B- Refundable (Caution Money)*</b>	<b>2000</b>	<b>10000</b>

**Note:**

\*The above fee structure is subject to change as per the decision of the General Body of the Institute.

#Examination Fee (Practical) only for Psychology Students.

\*Caution Money will be in addition to the total non-refundable amount.

\*The Cost of lost books of the library and any other damages incurred would be recovered from the caution money

**FEE STRUCTURE 2024-25**  
**Headwise Fee for Undergraduate Courses**

**B.B.A. (Bachelor of Business Administration)****(Amount in Rs.)**

Head of Fee	Indian Students (Amount)	NRI & Foreign Students/Payment Seats (Amount)
	Annual Fee	Annual Fee
<b>A- Non-Refundable Fee</b>		
<b>I - Academic Fee:</b>		
Admission /Re-admission Fee	800	4000
Tuition Fee	11550	57750
Library Fee (Including Reading Room & Magazine)	4000	20000
Co-curricular and extra-curricular Fee	1600	8000
Student Welfare Fee	1182	5910
Personality Development Test Fee	500	2500
Laboratory Fee	3000	15000
<b>II- Examination Fees:</b>		
Examination Fee (Theory)	4500	22500
Examination Fee (Practical)	2000	10000
<b>Development Fee</b>	2000	10000
University Fees/Portal Charges (only for first-year students)	250	250
<b>B- Refundable (Caution Money) *</b>	<b>2000</b>	<b>10000</b>

**Note:**

\*The above fee structure is subject to change as per the decision of the General Body of the Institute.

\*Caution Money will be in addition to the total non-refundable amount.

\*The cost of lost books of the library and any other damages incurred would be recovered from the caution money.

**FEE STRUCTURE 2024-25****Headwise Fee for Undergraduate Courses****B.P.E.S (Bachelor of Physical Education & Sports)****(Amount in Rs.)**

Head of Fee	Indian Students (Amount)	NRI & Foreign Students/Payment Seats (Amount)
	Annual Fee	Annual Fee
<b>A- Non-Refundable Fee</b>		
<b>I- Academic Fee:</b>		
Admission/Re-admission Fee	800	4000
Tuition Fee	6000	30000
Library Fee (Including Reading Room & Magazine)	1350	6750
Co-Curricular and Extra-Curricular Fee	1600	8000
Student Welfare Fee	1182	5910
Personality Development Test Fee	500	2500
<i>Laboratory Fees:</i>		
All Hons. Subjects	1200	6000
All Subs. Subjects	600	3000
<b>II- Examination Fee:</b>		
Examination Fee (Theory)	4500	22500
Examination Fee (per practical)	800	2000
Development Fee	2000	10000
University Fees/Portal Charges (only for first-year students)	250	250
<b>B- Refundable (Caution Money)*</b>		
Caution Money	2000	10000

**Note:**

\*The above fee structure is subject to change as per the decision of the General Body of the Institute.

\*Caution Money will be in addition to the total non-refundable amount.

\*The cost of lost books of the library and any other damages incurred would be recovered from caution money.



## Fee Structure for Ph.D. 2024-25

### Headwise Fee for Ph.D. (Fee for Research Centre) Courses

(Amount in Rs.)

Head of Fee	AMOUNT	
	Arts/Commerce/ Mathematics (Without Practical)	Chemistry/ Physics/ Biotechnology (With Practical)
<b>A- Non-Refundable Fee</b>		
<b>I - Academic Fee: (Yearly – at the time of admission)</b>		
Admission/Re-admission Fee (One time)	800	800
Tuition Fee	9900	9900
Library Fee (Including Reading Room & Magazine) (Rs.150/- per month)	1800	1800
Student Welfare Fee (One time)	1107	1107
Laboratory Fees (Rs.750/- per month)	-	9000
Development Fee (One time)	2000	2000
University Fees	As applicable	As applicable
<b>Total Fee (Non-Refundable)</b> <i>(Excluding University Fee)</i>	<b>15607</b>	<b>24607</b>
<b>B- Refundable (Caution Money)*</b>	<b>2000</b>	<b>5000</b>

**Note:**

*\*The above fee structure is subject to change as per the decision of the General Body of the Institute.*

*\*Once in a year at the time of admission.*

**Hostel Fee Structure (2024-25)**  
**(FOR BOYS & GIRLS)**

S.No.	Head of Fee	Amount in Rs. (per student per month)
1.	Room rent	
	Single seated furnished	1200/- per month
	Double seated furnished	1000/-per month
2	Maintenance & Other services	750/-per month
3.	Mess charges include (Tea, Snacks, Meals, Dinner)	1800/- approx per month as per tender
4.	Caution money (Refundable)	5000/- One time
5.	Skill Development	800/-per year
6.	Cooler on demand (seasonal)	At market rate on no profit no loss basis



**Students of Girls Hostel “Ojaswini” with the Director & other Teaching Staff**

## Medals Sponsored by the Institute/Faculty in Diverse Categories

Every year the Institute and its faculty members sponsor the following medals for the students

SN	Title of the Medal	Category
1.	Director's Medal	All round performance (sponsored by the Institute)
<i>Memorial Medals (Academics)</i>		<b>Toppers</b>
2.	Late. Shri S.L. Gupta Memorial Medal	B.A. Honours (Economics)
3.	Dr. Shanta Ramachandran Memorial Medal	B.A. Honours (English Literature)
4.	Late. Smt. Kasturidevi Jain Memorial Medal	B.A. Honours (Fashion Designing)
5.	Shri Krishna Bihari Johri Memorial Medal	B.A. Honours (Geography)
6.	Smt. Kanta & Shri Suresh Chandra Shrivastava	B.A. Honours (Hindi)
7.	Smt. Kanti Khare Memorial Medal	B.A. Honours (History)
8.	Shri Ganesh Mishra Memorial Medal	B.A. Honours (Psychology)
9.	Smt. Shobhana Sonwalkar Memorial Medal	B.A. Honours (Political Science)
10.	Anjani Kumar Dubey Memorial Medal	B.A. Honours (Sociology)
11.	Shri Chaturbhuj Garg Memorial Medal	B.Com. Honours (Accounts)
12.	Late. Dr. Premalata Pacholi Memorial Medal	B.Sc. Honours (Biotechnology)
13.	Shri Nandram Hundet Memorial Medal	B.Sc. Honours (Computer Science)
14.	Shri. Brijbhushan Mishra Memorial Medal	B.Sc. Honours (Electronics)
15.	Dr. Arun Kumar Saxena Memorial Medal	B.Sc. Honours (Geography)
16.	Smt. Shail Rastogi Memorial Medal	B.Sc. Honours (Physics)
17.	Shri Sanjay Saxena Memorial Medal	M.Sc. Chemistry
18.	Shri S.R. Marvah Memorial Medal	M.A. Economics
19.	Late. Shri Gwaladas Agrawal Memorial Medal	M.Sc. Physics
20.	Dr. Bhaskar Prasad Pandey Memorial Medal	M.A. Political Science
21.	Mrs. Champa Mishra Memorial Medal	M.A. Psychology
<i>Medals (Academics)</i>		<b>Toppers</b>
22.	Dr. Anita Shinde Medal	B.Sc. Honours (Chemistry)
23.	Shri Raaz Dwivedi Medal	B.Sc. Honours (Mathematics)
24.	Biotechnology Excellence Award	M.Sc. Biotechnology
25.	Resham Dwivedi Medal	M.Sc. Mathematics
<i>Memorial Medals/ Medal (Other achievements)</i>		<b>Field of Excellence</b>
26.	Late. Dr. Ram Sakha Gautam Memorial Medal	Highest Scorer of G.K./Current Affairs Test
27.	Shri Bhalchandra Athale Memorial Medal	Optimum use of the Library (Boys)
28.	Smt. Deepa Dehuliya Memorial Medal	Optimum use of the Library (Girls)
29.	Shri Aniket Sharma Memorial Award	All Rounder (Boy)
30.	Smt. Sarju Devi Virayvargiya Memorial Medal	All Rounder (Girl)
31.	Smt. Revati Barman Memorial Medal	Best NSS Volunteer (Girl)
32.	Late. Dr. Ratanchandra Jain Medal	Best Designer (Fashion Designing Department)

## उच्च शिक्षा उत्कृष्टता संस्थान, भोपाल : एक परिचय

- देश-विदेश के प्रतिभावान और होनहार विद्यार्थियों को उत्कृष्ट स्तर की शिक्षा सुलभ कराने हेतु वर्ष 1995 में प्रदेश सरकार द्वारा “उच्च शिक्षा उत्कृष्टता संस्थान, भोपाल” की स्थापना की गयी।
- भोपाल रेल्वे स्टेशन से 13 कि.मी. और रानी कमलापति रेल्वे स्टेशन से 7 कि.मी. की दूरी पर स्थित, शाहपुरा झील से लगभग 3 किलोमीटर के पहाड़ी उतार-चढ़ाव वाले रास्ते से होकर कलियासोत बाँध की नीरवता के मध्य नैसर्गिक सुषमा को समेटे, मधुर मुस्कान बिखेरता “उच्च शिक्षा उत्कृष्टता संस्थान” अपने समर्पित निष्ठावान आचार्यों, और ज्ञानकोषी जिज्ञासु छात्र-छात्राओं की कठोर शिक्षा साधना से सुगंधित, यह परिसर उपनिषद्कालीन आश्रमों की याद दिलाता है।
- उच्च शिक्षा उत्कृष्टता संस्थान, भोपाल एक विद्या-परिसर ही नहीं है अपितु यह एक वैचारिक आन्दोलन भी है। यू.जी.सी. अंतर्गत ‘नेक’ द्वारा संस्थान के बहुआयामी विकास एवं शैक्षणिक गुणवत्ता, परिणाम के आधार पर संस्थान को सर्वप्रथम सर्वोच्च ‘ए’ ग्रेड वर्ष 2004, पुनः वर्ष 2011 तथा वर्ष 2016 में प्राप्त हुआ। विगत सत्र 2023-24 में ही संस्थान को ‘ए+’(सर्वाधिक अंक 3.45) ग्रेड प्राप्त हुआ है। विश्वविद्यालय अनुदान आयोग, नई दिल्ली द्वारा संस्थान को वर्ष 2007 में स्वायत्ता प्राप्त हुई। संस्थान को प्रथम बार मार्च, 2010 में तथा दूसरी बार 2014 में विश्वविद्यालय अनुदान आयोग, नई दिल्ली द्वारा ‘College with Potential for Excellence’ (CPE) का स्तर प्रदान किया गया है। यह स्तर प्राप्त करने वाला देश का सबसे कम आयु का संस्थान है। देश की महामहिम राष्ट्रपति महोदया द्वारा संस्थान की राष्ट्रीय सेवा योजना की ईकाई को वर्ष 2021 के सर्वोच्च सम्मान (राष्ट्रीय) पुरस्कार से (सितंबर, 2023 में) सम्मानित किया गया।

### संकल्प एवं उद्देश्य

- प्रतिभा सम्पन्न एवं मेधावी विद्यार्थियों को उत्कृष्ट स्तर की शिक्षा-सुविधा एवं तदनुकूल वातावरण सुलभ कराया जाये, जिससे वे अपनी योग्यता और दक्षता का प्रमाण अखिल भारतीय सेवाओं, राज्य-सेवाओं, संगठित निजी एवं सार्वजनिक क्षेत्र के संस्थानों व विश्वविद्यालयों में दर्ज करा सकें।
- जीवन के विभिन्न क्षेत्रों में दायित्वों के सार्थक निर्वाह, परम्परागत एवं आधुनिक जीवन के आदर्शों, प्रादेशिक जन-जीवन की अपेक्षाओं, आकांक्षाओं और जरूरतों के साथ-साथ व्यावहारिक जीवन की नित्य-नई सामने आती चुनौतियों के समाधान के सन्दर्भ में आवश्यक जनशक्ति मानव संसाधन का निर्माण करना।
- विद्यार्थियों की जिज्ञासाओं और प्रश्नों के लिए, बौद्धिक दृष्टि से निरन्तर सचेत तथा अद्यतन रहते हुए इसके लिए ज्ञान-विज्ञान के सतत् परिवर्तनशील नवीनतम तथ्यों से सुपरिचित रहना तथा विद्यार्थियों में स्मृति, विचार, चिंतन-पद्धति, मौलिक सूझ-बूझ और आत्मविश्वास उत्पन्न करना संस्थान का मुख्य लक्ष्य है।
- संस्थान के विद्यार्थी अपनी उपाधियों से कम, जीवन की विविध भूमिकाओं में अपनी सहभागिता, विचार-पद्धति, दृष्टिकोण और व्यावहारिक कुशलता से पहचाने जाए, अपरिचित और नए प्रश्नों से हिचकिचाने/घबराने के स्थान पर उनमें अपनी रुचि प्रदर्शित करें, यही इन विधियों का अन्तर्निहित उद्देश्य



है। शिक्षा और उसके आधारभूत सांस्कृतिक मूल्यों तथा भारतीय संस्कृति के शाश्वत मूल्यों को विद्यार्थियों में स्थापित कर संस्कारवान बनाने हेतु संस्थान संकल्पित है।

## संस्थान की अभिनव योजनाएँ

### अकादमिक—विशेषताएं

- संस्थान ने 29 वर्षों में अपनी स्वायत्तता का पूर्णरूप से उपयोग करते हुए पाठ्यक्रमों की नियमित रूप से समीक्षा कर उसे अद्यतन करने, अध्ययन—अध्यापन विधियों, मूल्यांकन प्रणाली में गुणात्मकता तथा शिक्षक—विद्यार्थी के संबंधों के मध्य जो आत्मीय मर्यादाएँ स्थापित की हैं, उनके प्रति अभिभावकों और सचेत नागरिकों के मन में उच्च शिक्षा की मूल्यवत्ता और संस्कृति के प्रति नया विश्वास संचारित किया है।
- शिक्षा के स्तर में गुणात्मक विकास के लिये उच्च शिक्षा में गुणवत्ता और उत्कृष्टता के क्षेत्र में संस्थान ने उत्प्रेरक का कार्य किया है तथा इस संस्थान की कार्यशैली, सफलता और अच्छे परिणामों से प्रेरित होकर शासन द्वारा प्रथम बार 2002—03 में राज्य के अन्य आठ संभागीय मुख्यालयों के एक—एक प्रतिष्ठित महाविद्यालय को उत्कृष्ट महाविद्यालय के रूप में संचालित किया है।
- समस्त संकायों में स्नातक उपाधियों के लिये पढ़ाए जाने वाले सामान्य पाठ्यक्रमों के स्थान पर संस्थान ने अपने लिए स्नातक स्तर पर राष्ट्रीय शिक्षा नीति—2020 पर आधारित पाठ्यक्रम प्रणाली को अंगीकार किया है। संस्थान के विद्यार्थी देश—विदेश के अतिविशिष्ट नगरों के प्रतिष्ठित उच्च संस्थानों में प्रवेश प्राप्त करते हैं। ज्ञातव्य है कि संस्थान में कुल चौदह विषयों में स्नातकोत्तर कक्षाएँ संचालित हैं।

### मूल्यांकन एवं परीक्षा प्रणाली

संस्थान में विद्यार्थी मूल्यांकन के अनेक विकल्प अपनाए जाते हैं किन्तु मुख्यतः निम्नानुसार द्वि—स्तरीय मूल्यांकन पद्धति अपनाई जाती है:

- (i) **सतत् आंतरिक मूल्यांकन** : सतत् आंतरिक मूल्यांकन के अन्य रूपों में वस्तुनिष्ठ प्रश्न, निर्दिष्ट आलेख रचना (असाइनमेन्ट) और पहले से निर्देशित विषय पर कक्षा अध्यापन सम्मिलित हैं। कक्षा में आकस्मिक विषय—परीक्षण भी एक पद्धति है। सामान्य ज्ञान सामूहिक परीक्षा भी पृथक से आयोजित की जाती है।
- (ii) **परंपरागत परीक्षा प्रणाली** —संस्थान ने पहले से चली आ रही परीक्षा—प्रणाली को किंचित परिवर्तनों के साथ लागू रखा है। चार—वर्षीय स्नातक पाठ्यक्रम के कुल आठ सत्रों (सेमेस्टर) में बाह्य परीक्षाएँ आयोजित की जाती हैं जो पाठ्यावधि (सेमेस्टर) के समूचे पाठ्यक्रम को आधार बनाती हुई विद्यार्थी की स्मृति, विचार, तर्क, विश्लेषण और भाषाई—अभिव्यंजना—कौशल की जाँच करती है। इस तरह संस्थान के समस्त विद्यार्थी छः माह की अवधि में एक ही पाठ्यक्रम को आन्तरिक और बाह्य मूल्यांकन पद्धति के माध्यम से आत्मसात्/ज्ञानार्जन करते हैं। सैद्धांतिक प्रश्नपत्र को 'अ', 'ब' और 'स' कुल तीन खण्डों में विभाजित किया जाता है।

इस संदर्भ में यह उल्लेखनीय है कि समूचे पाठ्यक्रम के पचास प्रतिशत अंक आंतरिक और पचास प्रतिशत बाह्य मूल्यांकन के आधार पर दिये जाते हैं। विद्यार्थियों के बाह्य मूल्यांकन का कार्य अनुभवी विषय-विशेषज्ञों द्वारा सम्पन्न कराया जाता है।

### (iii) पारदर्शिता पूर्ण आदर्श परीक्षा एवं मूल्यांकन प्रणाली :

- किसी भी परीक्षार्थी की उत्तर पुस्तिका की फोटोकॉपी उसके अथवा अभिभावकों द्वारा माँगी जाने पर निश्चित शुल्क भुगतान करने पर दी जा सकती है।
- सर्वोच्च अंक पाने वाले सर्वोत्कृष्ट विद्यार्थियों की उत्तर पुस्तिकाएँ मॉडल के रूप में संस्था के पुस्तकालय में सुलभ रहती है।
- आंतरिक मूल्यांकन प्रणाली में भी प्रत्येक विद्यार्थी को उसकी उत्तर पुस्तिका दिखाई जाती है।
- गत वर्षों के सभी विषयों के प्रश्न-पत्र छात्रों के लिए संस्थान की वेबसाइट एवं पुस्तकालय में उपलब्ध रहते हैं।

### पाठ्यक्रमेत्तर पाठ एवं पाठ्येत्तर जीवन

- कक्षा-अध्यापकों के नियमित व्याख्यानों, चर्चा-परिचर्चा के अलावा बाहर से आमंत्रित विषय-विशेषज्ञों के व्याख्यानों का अनवरत् सिलसिला संस्थान की अध्यापन-संस्कृति का अनिवार्य अंग है।
- विद्यार्थियों के मानसिक विस्तार के लिए धर्म, दर्शन, कला और संस्कृति से परिचित कराने हेतु जाने माने व्यक्तित्व आमंत्रित किए जाते हैं। शैक्षणिक भ्रमण न केवल विद्यार्थियों को वास्तविक औद्योगिक, सांस्कृतिक गतिविधियों से परिचित कराता है, बल्कि उनमें नई ऊर्जा का संचार भी करता है और देश के विभिन्न क्षेत्रों के सामाजिक, सांस्कृतिक जीवन की झलक भी देखने को मिलती है।

### (i) खेलकूद एवं क्रीड़ा-परिसर

कक्षाओं से मुक्त होकर खेल के मैदान में जाना और वहाँ से तरोताजा होकर फिर कक्षाओं की ओर लौटना एक ऐसी दिनचर्या है जो शिक्षा को जीवन की परिपूर्णता और सर्वांगीणता की ओर ले जाती है। संस्थान में वॉलीबॉल कोर्ट, बास्केटबॉल कोर्ट, फुटबाल मैदान, हैण्डबॉल कोर्ट, क्रिकेट मैदान, लॉन टेनिस कोर्ट, ओपन जिम विद्यार्थियों के कक्षा के बाद चहेते स्थान हैं। संस्थान का इनडोर स्टेडियम, बैडमिंटन कोर्ट, टेबल-टेनिस, शतरंज, इनडोर जिम का भी लाभ हमारे विद्यार्थी प्राप्त कर रहे हैं।

### (ii) विद्यार्थी-कल्याण की दृष्टि से

- विद्यार्थियों के लिए वाचनालय एवं डिजिटल पुस्तकालय, शैक्षिक यात्रा-विहार, छात्राओं के लिए छात्रावास एवं कॉमन रूम, सांस्कृतिक आयोजनों के लिए तीन खुले रंगमंच, आधुनिक सुविधाओं से परिपूर्ण छः सेमीनार हॉल, एक स्पोर्ट्स कॉम्प्लेक्स एवं स्मार्ट क्लास, आधुनिक कैण्टीन सुविधाएँ उपलब्ध हैं।
- ऑनलाईन लर्निंग को ध्यान में रखते हुए “संस्थान” ने अपना ऑनलाईन प्लेटफार्म “ज्ञानमेघ” यू-ट्यूब पर लांच किया है, जिसमें सभी विषय से संबंधित ई-कंटेंट व वीडियो उपलब्ध करवाये जा रहे हैं।
- इसी तरह बीच-बीच में सेमीनार, प्रश्न-मंच, विशिष्ट व्याख्यान मालाएँ, नृत्य-गीत आदि अनेक आमोद-प्रमोद, संस्थान के विद्यार्थियों में उस सहजता का संचार करते हैं जिससे उनका व्यक्तित्व किताबी

मात्र होने की दुर्घटनाओं से बच जाता है। वे भीतर और बाहर के जीवन और उसके बीच से होकर आने वाले आत्मविश्वासपूर्ण व्यक्तित्व का अनुभव कर पाते हैं।

- संस्थान के इतिहास विभाग ने संग्रहालय का निर्माण किया है, मध्यप्रदेश में महाविद्यालय स्तर पर यह एक अभिनव पहल है।
- संस्थान में एन.सी.सी. और एन.एस.एस की इकाईयां हैं जिसके माध्यम से राष्ट्रभक्ति, ग्रामीण जीवन अनुभव, व्यक्तित्व विकास के नवीन प्रयोग किये जाते हैं, यथा—ग्राम विकास हेतु ग्राम गोद लेना, पिछड़ी एवं निर्धन बस्ती के बच्चों को मुफ्त शिक्षा और स्वास्थ्य की सुविधा उपलब्ध कराना आदि।

### अन्त में हम कह सकते हैं कि—

- संस्थान धीरे-धीरे एक समृद्ध और सुरुचिपूर्ण हरे-भरे परिसर की सम्मोहकता ग्रहण करने की दिशा में निरंतर अग्रसर है।
- हम नवीनतम संसाधनों, तकनीकी बारीकियों के साथ आधारभूत संरचना को सुधारते हुए मानव निर्माण की प्राचीन सांस्कृतिक परम्परा एवं आधुनिक विज्ञान के समन्वय से एक श्रेष्ठतम प्रतिष्ठान की स्थापना और उसके विकास में प्रयत्नशील हैं।
- समाज अनुभव कर सके कि— **‘सा विद्या या विमुक्तये’** साथ ही **‘सहनाववतु, सहनौभुनक्तु’** तथा **‘सर्वे भवन्तु सुखिनः, सर्वे सन्तु निरामयः’** की कामना लिये हमारा संस्थान मानव संसाधन ‘मनुष्य’ विकसित कर अपने मकरंद से समाज को सुरभित करने कृतसंकल्प है।



Prof. Suresh Kumar Jain, Hon'ble Vice Chancellor of Barkatullah University and Director of the Institute presenting the **Directors Medal** to **Ms. Ekal Indurkhiya**

## FACULTY OF IEHE FAMILY: 2024-2025

Dr. Pragyesh Kumar Agrawal – Director				
SN	Name	Designation	Qualification	Specialization
Department of Business Administration				
01	Dr. Sharda Gangwar (HOD)	Professor	M.Com., Ph.D.	Marketing Management
Department of Biotechnology				
02	Dr. Ranjana Verma (HOD)	Professor	M.Sc., Ph.D.	Cytogenetic & Plant Breeding
03	Dr. Ajay Kumar Bharadwaj	Professor	M.Sc., Ph.D.	Cytogenetic & Plant Breeding
04	Dr. Ruchira Chaudhary	Professor	M.Sc., Ph.D.	Entomology
05	Dr. H.K. Garg	Professor	M.Sc., Ph.D.	Cell Biology
Department of Chemistry				
06	Dr. Jyoti Saxena (HOD)	Professor	M.Sc., Ph.D.	Organic Chemistry
07	Dr. Anjali Acharya	Professor	M.Sc., Ph.D.	Physical Chemistry, Chemical Kinetics
08	Dr. Sandhya Trivedi	Professor	M.Sc., Ph.D.	Organic Chemistry
09	Dr. Pushpa M. Rawtani	Professor	M.Sc., Ph.D.	Inorganic Chemistry
10	Dr. Ram Krishna Shrivastava	Professor	M.Sc., Ph.D.	Inorganic Chemistry
11	Dr. Surbhi Garde	Professor	M.Sc., Ph.D.	Organic Chemistry
12	Dr. Nidhi Chouhan	Asst. Professor	M.Sc., Ph.D.	Organic Chemistry
13	Dr. Akhilesh Shende	Asst. Professor	M.Sc., Ph.D.	Physical Chemistry, Bioinformatics
Department of Commerce				
14	Dr. S.S. Vijayvargiya (HOD)	Professor	M.Com., Ph.D.	Accounting & Taxation
15	Dr. Ajay Kumar Mishra	Professor	M.Com., Ph.D.	Indian Economy
16	Dr. N.R. Das	Professor	M.Com., Ph.D.	Statistics & Population Econometrics
17	Dr. Mukesh Jain	Professor	M.Com., Ph.D.	Accounts, Rural Development, Financial Management
18	Dr. Mahendra Singhai	Professor	M.Com., Ph.D.	Accounting
19	Dr. Sharda Gangwar	Professor	M.Com., Ph.D.	Marketing Management
20	Dr. Preeti Mishra	Professor	M.Com., Ph.D.	Accounting
21	Dr. Meenakshi Rathi	Asst. Professor	M.Com., MBA, Ph.D.	Finance and Accounting
22	Mrs. Ankita Patel	Asst. Professor	M.Com.	Accounting
Department of Computer Science				
23	Dr. Sabhakant Dwivedi	Professor of Mathematics (HOD-Additional Charge)		
Department of English				
24	Dr. A.K. Chaturvedi (HOD)	Professor	M.A., Ph.D.	Indian English Literature
25	Dr. Seeme Mahmood	Asso. Professor	M.A., Ph.D.	Indian Writing in English
26	Dr. Jaya Sharma	Asso. Professor	M.A., Ph.D.	American Literature
27	Mrs. Neelam Dwivedi	Asst. Professor	M.A., M.Phil.	Indian Writing in English
28	Mrs. C. Anitha	Asst. Professor	M.A., M.Phil.	American Literature
29	Dr. Saman Ashfaq	Asst. Professor	M.A. Ph.D.	Post Colonial Fiction
Department of Economics				
30	Dr. H.B. Gupta (HOD)	Professor	M.A., Ph.D.	Micro Economics & Statistics
31	Dr. Mahipal Singh Yadav	Professor	M.A., Ph.D.	Banking, Development Economics, Q.T.
32	Dr. Manish Sharma	Professor	MA,MPhil,Ph.D.	Mathematical, Urban & Tribal Economics
Department of Fashion Design				
33	Dr. Renu Jain (HOD)	Professor	M.Sc., Ph.D.	Clothing & Textiles
34	Dr. Smita Jain	Professor	M.Sc., Ph.D.	Clothing & Textiles
Department of Food Science & Quality Control				
35	Dr. Usha Kahol (HOD)	Professor	M.Sc., Ph.D.	Food & Nutrition
36	Ms. Chandrakanta Mourya	Asst. Professor	M.Sc., Ph.D.	Food & Nutrition
Department of Forensic Science				
37	Dr. Anjali Acharya (HOD)	Professor of Chemistry (HOD-Additional Charge)		



## FACULTY OF IEHE FAMILY: 2024-2025

SN	Name	Designation	Qualification	Specialization
<b>Department of Geography</b>				
38	Dr. Durgesh Kurmi (HOD)	Asst. Professor	M.A., Ph.D.	Urban Geography
39	Ms. Ankita Yadav	Asst. Professor	M.A.	Population Geography
<b>Department of Hindi</b>				
40	Dr. Arti Shrivastava (HOD)	Asso. Professor	M.A., Ph.D.	Bhasha Vigyan
41	Dr. Arti Dubey	Asso. Professor	MA, Ph.D., D.Lit	Bhasha Vigyan
<b>Department of History</b>				
42	Dr. A.K. Chachondia (HOD)	Asst. Professor	M.A., Ph.D.	Ancient Indian Art and Architecture
43	Dr. Ramvilas Markam	Asst. Professor	M.A., Ph.D.	Modern Indian History
<b>Department of Mathematics</b>				
44	Dr. M.K. Shukla (HOD)	Professor	M.Sc., Ph.D.	Topology – Abstract Algebra
45	Dr. Amarjeet Singh Saluja	Professor	M.Sc., Ph.D.	Real Analysis
46	Dr. Swami Swaroop Shrivastav	Professor	M.Sc., Ph.D.	Generalized Hyper Geometric Functions
47	Dr. Makhan Singh Chouhan	Professor	M.Sc., Ph.D.	Functional Analysis
48	Dr. Sabhakant Dwivedi	Asso. Professor	M.Sc., Ph.D.	Functional Analysis
49	Dr. Manoj Ughade	Asst. Professor	M.Sc., Ph.D.	Fixed Point Theory & Linear Algebra
50	Dr. Ram Milan Singh	Asst. Professor	M.Sc., Ph.D.	Fixed Point Theory & Linear Algebra
<b>Department of Physics &amp; Electronics</b>				
51	Dr. A.K. Rastogi (HOD)	Professor	M.Sc., Ph.D.	Elect., Microwave Comm., Patch Antenna
52	Dr. Anuj Hundet	Professor	M.Sc., Ph.D.	Bio-Based Power Sources, Mathematical Physics
53	Dr. Sunil Mishra	Professor	M.Sc., Ph.D.	Digital Electronics
54	Dr. Pragyesh Kumar Agrawal	Professor	M.Sc., Ph.D.	Digital Electronics, Solid State Physics
55	Dr. Benoy Kumar Sinha	Professor	M.Sc., Ph.D.	Nanoparticle Physics, Radio Physics & Elect.
56	Dr. Amit Kumar Jain	Professor	M.Sc., Ph.D.	Digital Electronics, Ionospheric
57	Dr. S.K. Jain	Professor	M.Sc., Ph.D.	Solid State Physics, Ionosphere & Seismic Perturbation
<b>Department of Political Science</b>				
58	Dr. Indu Pandey (HOD)	Professor	M.A., Ph.D.	International Politics
59	Dr. Anita Deshpande	Professor	M.A., Ph.D.	Public Ad., Indian Government & Politics
60	Dr. Sadhana Pandey	Professor	M.A., Ph.D.	Indian Government & Politics
<b>Department of Psychology</b>				
61	Dr. Anupam Shukla (HOD)	Professor	M.A., Ph.D.	Experimental Psychology
62	Dr. Rachana Singh Thakur	Asst. Professor	M.A., Ph.D.	Counselling Psychology
63	Smt. Anamika Kujur	Asst. Professor	M.A.	Counselling Psychology
<b>Department of Sociology</b>				
64	Dr. Shailja Dubey (HOD)	Professor	M.A., Ph.D.	Social Problems & Criminology
65	Dr. Indira Barman	Asso. Professor	M.A., Ph.D.	Tribal Sociology
<b>Department of Library Science</b>				
66	Dr. Pragya Gupta	Librarian	M.Lib., Ph.D.	User Studies (Information Need & Seeking Behaviour)
<b>Department of Sports</b>				
67	Dr. V.S. Rai	Sports Officer	M.P.Ed., MA, NIS, Ph.D.	Sports Training & Coaching
<b>Office/Administrative Staff &amp; Lab Technician</b>				
68	Smt. Gayatri Pandey	Head Clerk (I/C) /Accountant		
69	Shri Rajendra Sahare	Assistant Grade II		
70	Shri Rajkumar Dwivedi	Assistant Grade III		
71	Shri Sanjeev Rathore	Lab. Technician/ Store Incharge		
72	Ms. Simmi Balyan	Lab. Technician – Biotechnology		
73	Shri Chandaprakash Singh	Farrash		

# NATIONAL SERVICE SCHEME



The National Service Scheme (NSS) is a Central Sector Scheme of Government of India, Ministry of Youth Affairs & Sports. It provides opportunity to the student youth of 11th & 12th Class of schools at +2 Board level and student youth of Technical Institution, Graduate & Post Graduate at colleges and University level of India to take part in various government led community service activities & programmes. The sole aim of the NSS is to provide hands on experience to young students in delivering community service

**Motto:** The motto of National Service Scheme is

IT'S NOT ME,  
IT'S YOU.

“स्वयं से पहले आप”

**Aim:** Community service through education, education through community service.

**Objective:** Development of student's personality through community service.

**Selection criteria:-** In IEHE NSS, there are two units ; one for males and the other for females. Each unit can have maximum 100 volunteers. Any student of IEHE can register him/her self for becoming a NSS volunteer. There are no requirements as such or there is no selection criteria. Being a government scheme, every student can avail for it. But there are selections , auditions and requirements asked for higher level of opportunities in NSS such as Camps, trainings, leadership activities etc. For such higher level opportunities, one must be an active volunteer of IEHE NSS, only then the person becomes eligible.

**Regular Activities:** Orientation Program, Plantation Drive, Blood Donation, AIDS Awareness, Cleanliness Drive, Voting Rights Awareness, Financial Literacy

**Special Activities:** Literacy club Activities, Eye Donation Camp, Traffic Awareness Camp, Health Check up camps, Child Protection club Activities, Old Age Home visit, Environment Protection Activities

## **What NSS provides to the volunteers?**

A NSS volunteer who takes part in the community service program would either be a college level or a senior secondary level student. Being an active member, these student volunteers would have the exposure and experience to various Special, National and International Camps. There are three certificates that one volunteer can get by doing community service activities for 120 hours(A Certificate)/ 240 hours(B Certificate)/ 360 hours(C Certificate) .

## **Personality Development Opportunities Provided By NSS to Volunteers:-**

- 7 DAYS UNIT CAMP
- DISTRICT LEVEL LEADERSHIP TRAINING CAMP
- UNIVERSITY LEVEL LEADERSHIP TRAINING CAMP
- MADHYA PRADESH STATE LEVEL LEADERSHIP TRAINING CAMP
- NATIONAL INTEGRATION CAMP
- NATIONAL ADVENTURE CAMP
- NATIONAL YOUTH FESTIVAL
- PRE - REPUBLIC DAY PARADE CAMP
- REPUBLIC DAY PARADE CAMP
- INTERNATIONAL YOUTH EXCHANGE PROGRAM



# NATIONAL CADET CORPS



The National Cadet Corps is the Indian military cadet corps with its head Quarters at New Delhi. It is open to school and college students on voluntary basis. The National Cadet Corps in India are a voluntary organization which recruits cadets from high schools, colleges and Universities all over India. The Cadets are given basic military training in small arms and parades. The officers and cadets have no liability for active military service once they complete their course but are given preference over normal candidates during selections based on the achievements in the corps.

**MOTO: "Unity and Discipline"**

**"एकता और अनुशासन"**

**AIM:** • To develop character, comradeship, discipline, leadership, secular outlook, spirit of adventure and ideals of selfless service. • To provide leadership in all walks of life and be always available for the service of the nation. • To provide a suitable environment to motivate the youth to take up a career in the armed, air and navy forces.

**NCC ACTIVITY:** Throughout the year, various camps organized to train cadets in all field. These activities are as follow:

## CAMPS

Republic Day Camp (RDC)	Hiking and Trekking Camps	Prime Minister's Rally	Thal Sainik Camp (TSC)
Combined Annual Training Camps(CATC)	Nau Sainik Camp (NSC)	National Integration Camp (NIC)	All India Yachting Regetta (AIYR)
Advance leadership course	Rock Climbing Camps (RCC)	Army Attachment Camp	Youth Exchange Programme

## SOCIAL SERVICE AND COMMUNITY DEVELOPMENT

Adventure Based Learning.	Mountaineering Expeditions.	All India Trekking Expedition.
Camel Safari.	Parasailing.	Para Basic Course.

**NOTE:** We have unit of 107 cadets, this year at least 30 vacancies are allotted for fresh recruits (Boys/girls). The enrollment process will begin after the commencement of new session. Further information about registration and enrollment criteria will be uploaded on college website <https://iehe.ac.in/Index.aspx?ID=En> . **For any query students can contact CTO Dr. Durgesh Kurmi**

## उच्च शिक्षा उत्कृष्टता संस्थान, भोपाल

### विभिन्न संस्थाओं के साथ एम.ओ.यू.

उच्च शिक्षा उत्कृष्टता संस्थान, भोपाल द्वारा शिक्षा, शोध एवं उद्यमिता के क्षेत्रों में परस्पर सहयोग हेतु निम्न संस्थाओं के साथ एम. ओ. यू. किये गये हैं:

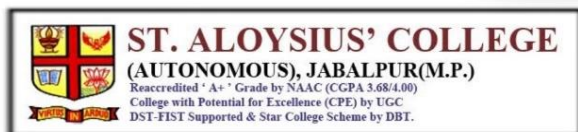
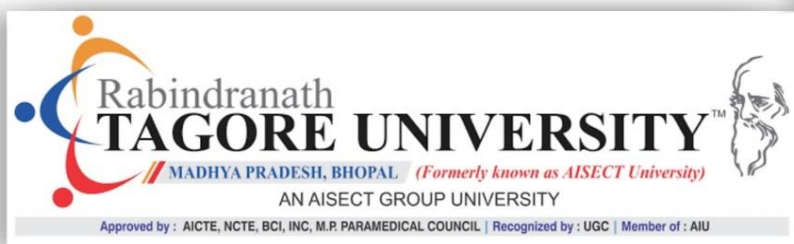
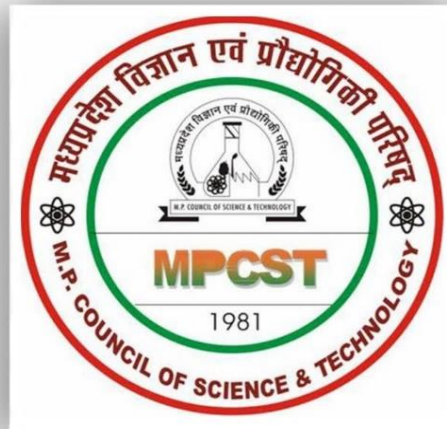
संस्थान	समझौता ज्ञापन (MoU) की संस्था
उच्च शिक्षा उत्कृष्टता संस्थान, भोपाल	चिरायु मेडिकल महाविद्यालय एवं अस्पताल, भोपाल, म.प्र.
	शासकीय कन्या महाविद्यालय, महू-नीमच रोड मंदसौर म.प्र.
	शासकीय होल्कर साइंस महाविद्यालय, इंदौर, म.प्र.
	शासकीय माधव विज्ञान महाविद्यालय, उज्जैन, म.प्र.
	श्री क्लॉथ मार्केट कन्या वाणिज्य महाविद्यालय, इंदौर, म.प्र.
	आई सी ए आर- केन्द्रीय कृषि इंजीनियरिंग संस्थान, भोपाल, म.प्र.
	भारतीय परिवार नियोजन संघ (एफ.पी.ए.- इंडिया)
	आई.ई.एस विश्वविद्यालय रातीबड़, भोपाल म.प्र.

विभाग	समझौता ज्ञापन (MoU) की संस्था
अर्थशास्त्र	जयपुरिया प्रबंधन संस्थान, इंदौर, म.प्र.
	शावर वेल्थ एकेडमी, भोपाल, म.प्र.
	एनसीडीईएक्स निवेशक (ग्राहक) प्रोटेक्शन फंड ट्रस्ट, मुंबई
समाज शास्त्र	मध्यप्रदेश राज्य महिला आयोग, म.प्र.
फॉरेंसिक साइंस	शासकीय न्याय सहायक विज्ञान संस्था, नागपुर
वाणिज्य	गोदरेज कंपनी लिमिटेड
फैशन डिजाइन	अनंत स्पीनिंग मिल्स मंडीदीप, भोपाल, म.प्र.
व्यवसायिक प्रकोष्ठ	ईकोहॉलिल्स एड-टेक प्राइवेट लिमिटेड, भोपाल, म.प्र.
राजनीति शास्त्र	साँची बौद्ध-इंडिक अध्ययन विश्वविद्यालय, साँची, म.प्र.
	अटल बिहारी बाजपेयी सुशासन एवं नीति विश्लेषण संस्थान, भोपाल
	क्षेत्रीय शहरी एवं पर्यावरण अध्ययन केन्द्र, लखनऊ उ.प्र.



# OUR

# Academic partners



and many more...

## संस्थान-गान

विद्या दाता गौरवशाली, सरस्वती का आंगन है  
सतरंगी मुरकान बिखेरे, उत्कृष्टता संस्थान है (२)  
झीलों की पावन नगरी में, मोहक मंगल कानन है  
नैसर्गिक मुरकान बिखेरे, अपना ये संस्थान है (२)॥१॥

ऋषियों के आश्रम सा मनहर, जहाँ पढ़ाते ज्ञानी गुरुवर  
यहां सुशासन की आभा है, भेदभाव का नाम नहीं। (२)  
प्रतिभाओं का यहाँ खजाना, मणियों में है प्रभामणी  
तारों में ध्रुव तारा सा है, हम सबका अभिमान यही (२)॥२॥

शिक्षण-अधिगम में अग्रज बन, नवयुग का निर्माता है  
विद्या आदर्शों को रचकर, नैतिक पाठ पढ़ाता है। (२)  
शिक्षा के सिरमौर यहाँ, और नवाचार की अभिलाषा  
शोध क्षेत्र में हम हैं आगे, स्वर्णिम काल हमारा है (२)॥३॥

राजा भोज की नगरी में है, शिक्षा का वरदान यहाँ  
कला और वाणिज्य यहाँ, और तकनीकी विज्ञान यहाँ। (२)  
अपनी शिक्षण यात्रा में यहाँ कई रत्नों का जन्म हुआ  
खेलकूद की बगिया से, यहाँ कई पुष्पों का उदय हुआ (२)॥४॥

उत्तम है परिवेश यहाँ का, उत्तम ही परिधान है  
संस्कृति का पावन संगम यह, इसकी ये पहचान है (२)।  
तक्षशिला नालंदा सा ही, यह परिसर श्री महान है  
जो भी श्रेष्ठ-उत्कृष्ट यहाँ पर, यही अभीष्ट हमारा है (२)॥५॥

विविधा की मुरकान समेटे अपना ये संस्थान है  
मध्यप्रदेश का गौरव है, यह उत्कृष्टता संस्थान है। (२)  
विद्या दाता गौरवशाली, सरस्वती का आंगन है  
सतरंगी मुरकान बिखेरे, उत्कृष्टता संस्थान है (२)॥६॥

## मध्यप्रदेश-गान

सुख का दाता, सब का साथी, शुभ का यह संदेश है,  
माँ की गोद, पिता का आश्रय, मेरा मध्यप्रदेश है।

विंध्याचल सा भाल, नर्मदा का जल जिसके पास है,  
यहाँ ज्ञान विज्ञान कला का, लिखा गया इतिहास है,  
उर्वर भूमि, सघन वन, रत्न, सम्पदा जहाँ अशेष है,  
स्वर-सौरभ-सुषमा से मंडित, मेरा मध्यप्रदेश है।

सुख का दाता, सब का साथी, शुभ का यह संदेश है,  
माँ की गोद, पिता का आश्रय, मेरा मध्यप्रदेश है।

क्षिप्रा में अमृत घट छलका, मिला कृष्ण को ज्ञान यहाँ,  
महाकाल को तिलक लगाने, मिला हमें वरदान यहाँ,  
कविता, न्याय, वीरता, गायन, सब कुछ यहाँ विशेष है,  
हृदय देश का यह, मैं इसका, मेरा मध्यप्रदेश है।

सुख का दाता, सब का साथी, शुभ का यह संदेश है,  
माँ की गोद, पिता का आश्रय, मेरा मध्यप्रदेश है।

चंबल की कल-कल से गुंजित, कथा तान, बलिदान की,  
खजुराहो में कथा कला की, चित्रकूट में राम की,  
भीमबैठका आदिकला का, पत्थर पर अभिषेक है,  
अमृतकुंड अमरकंटक में, ऐसा मध्यप्रदेश है।

सुख का दाता, सब का साथी, शुभ का यह संदेश है,  
माँ की गोद, पिता का आश्रय, मेरा मध्यप्रदेश है।

## राष्ट्र-गान

जन-गण-मन अधिनायक जय है

भारत भाग्य विधाता।

पंजाब-सिंधु-गुजरात-मराठा

द्राविड़-उत्कल-बंग

विंध्य हिमाचल यमुना गंगा

उच्छल जलधि तरंग

तव शुभ नामे जागे,

तव शुभ आशीष मांगे

गाहे तव जय-गाथा।

जन-गण-मंगलदायक जय है

भारत भाग्य विधाता।

जय है, जय है, जय है,

जय जय जय जय है।







# उत्कृष्टता संस्थान में कौन बनेगा वोटर नम्बर-वन विवज

भोपाल (काप्र)।

उच्च शिक्षा उत्कृष्टता संस्थान में लोकसभा चुनाव प्रचार के अंतर्गत स्वीप द्वारा लोकसभा चुनाव में मतदान का प्रतिशत एवं लोगों को मतदान के प्रति जागरूक करने हेतु आज कौन बनेगा वोटर नंबर-वन क्विज का आयोजन किया गया।

प्रतियोगिता में मुख्य अतिथि के रूप में स्वीप टीम के सदस्य रविकांत ठाकुर व मोहन मालवीय उपस्थित रहे। अतिथि के रूप में संस्थान संचालक डॉ. प्रवेश कुमार आग्रवाल व डॉ. प्रीती मिश्रा, डॉ. मोनाक्षी राठी एवं श्रीमती अंकिता पटेल उपस्थित रहे। क्विज प्रतियोगिता की शुरुआत मतदाता शपथ ग्रहण से की गयी जिसमें संचालक डॉ. आग्रवाल द्वारा समस्त उपस्थित जनों को मतदान की शपथ दिलायी गयी। इसके पश्चात क्विज का शुभारम्भ रविकांत ठाकुर द्वारा किया गया। प्रतियोगिता में मुख्य रूप से मतदान, निर्वाचन, व ई. बी.पी. मशीन से सम्बन्धित प्रश्न पूछे गये। क्विज प्रतियोगिता के दौरान दर्शक दीर्घा में



सर्वाधिक अंक प्राप्त किये। इन 10 विद्यार्थियों को डीबी मॉल में रज्ज्वर स्तर क्विज प्रतियोगिता में भाग लेने का अवसर मिला।

प्रतियोगिता में मुख्य रूप से मतदान, निर्वाचन, व ई. बी.पी. मशीन से सम्बन्धित प्रश्न पूछे गये। क्विज प्रतियोगिता के दौरान दर्शक दीर्घा में

बैठे लोगों में भी प्रश्न दिए गए, जो भी सही प्रश्नों के सही जवाब दे रहे थे उनका नाम लकड़ी ड्रा हेतु चयन किया गया। प्रतियोगिता कुल 2 राउंड में सम्पन्न की गयी। टॉप 10 विद्यार्थियों का परिणाम घोषित करना आयोजकों हेतु बहुत ही कठिन रहा क्योंकि लगभग सभी प्रतिभागियों द्वारा प्रश्नों के सही

जवाब दिये गये। कौन बनेगा वोटर नंबर - 1 प्रतियोगिता में संस्थान से कुल 92 बच्चों ने भाग लिया। स्वीप द्वारा इस प्रतियोगिता का आयोजन करवाने का मुख्य उद्देश्य युवा समुदाय को मतदान करने हेतु जागरूक एवं चुनाव से सम्बन्धित पूर्ण जानकारी प्राप्त करवाना रहा।

## एकेडेमिया-इंडस्ट्री इंटरफेस कार्यक्रम का आयोजन

### इंडस्ट्री और अकादमी के बीच का अंतर कम करना ही आयोजन का उद्देश्य: डॉ. चौधरी

हरिभूमि न्यूज | भोपाल

उत्कृष्टता संस्थान में एकेडेमिया-इंडस्ट्री इंटरफेस कार्यक्रम का आयोजन किया गया, जिसमें प्रदेश के प्रतिष्ठित उद्योगपतियों का संस्थान में प्रथम समागम हुआ। व्यावसायिक पाठ्यक्रम की नोडल अधिकारी डॉ. रुचिरा चौधरी ने कहा कि अकादमी के क्षेत्र में यह एक ऐतिहासिक क्षण है, जब अकादमी और इंडस्ट्री का सम्मेलन यहां किया जा रहा है। इस कार्यक्रम का उद्देश्य यह है कि विद्यार्थियों के भविष्य को सुरक्षित करने हेतु इंडस्ट्री और अकादमी का अंतर कम किया जा सके। उद्योगपतियों और विद्यार्थियों को आपस में एक दूसरे को समझने का अवसर प्राप्त हो।



### नौकरियों की नहीं नौकरी देने वालों की जरूरत: नरहरी

मुख्य अतिथि पी नरहरी- सचिव डिपार्टमेंट ऑफ एमएसएमई ने विद्यार्थियों से कहा कि नौकरियों की नहीं नौकरियों देने वालों की जरूरत है। अपने व्यक्तित्व को बाजार के लिए तैयार कीजिये क्योंकि आपको साबित करना होगा कि आप सर्वश्रेष्ठ हैं। उन्होंने इस हेतु सरकारी योजनाओं की जानकारी भी दी।

## बिना इंस्पिरेशन शुरू नहीं हो सकती डिजाइनिंग

आईईएचई में फैशन पोर्टफोलियो मेकिंग वर्कशॉप... सपना सिंह ने स्टूडेंट्स को दिए टिप्स

सिटी रिपोर्टर। इंस्टीट्यूट ऑफ एक्सीलेंस इन हायर एजुकेशन (आईईएचई) में तीन दिनों की फैशन पोर्टफोलियो मेकिंग वर्कशॉप का आयोजन हुआ। इसमें एक्सपर्ट के तौर पर फैशन पोर्टफोलियो एक्सपर्ट सपना सिंह प्रभार मौजूद रहीं। उन्होंने स्टूडेंट्स को मूड बोर्ड, इंस्पिरेशन बोर्ड, कलर बोर्ड, इलस्ट्रेशन बोर्ड और स्वाचेज बोर्ड तैयार करना सिखाया, जो यह तय करता है कि ड्रेस के कलर कॉम्बिनेशन से लेकर कपड़े का टेक्स्चर कैसा होगा।



### मूड बोर्ड में जरूरी हैं नए फोरकास्ट

सपना सिंह ने बताया कि हर मूड से जुड़े हुए कुछ कलर्स होते हैं, जिनका ख्याल रखना जरूरी है। उसमें भी अगर आपके मूड बोर्ड में उन रंगों का रिफ्लेक्शन दिखाता है, जो इंटरनेशनल फैशन फोरकास्ट का हिस्सा रहे हैं तो आपका डिजाइन रिलेवंट हो जाता है। अपनी डिजाइन प्रोसेस शुरू करने के पहले आप अपनी इंस्पिरेशन जरूर लिखें, क्योंकि बिना इसके कोई भी डिजाइनिंग शुरू नहीं हो सकती। इस पर स्टूडेंट्स ने 100 से ज्यादा इंस्पिरेशन लिखे। इसमें किसी का इंस्पिरेशन नेचर बना तो किसी ने म्यूजिक और योगा को चुना। करीब 80 शीट्स के इलस्ट्रेशन के बाद यह फैशन वर्कशॉप पूरी हुई। इस मौके पर कलेंज फेकल्टी में डॉ. रणु जैन और डॉ. स्मिता भी मौजूद रहीं।

TheHitavada

Bhopal City Line | 2024-04-20 | Page-2  
ehitavada.com

## My Health, My Right: State Health Deptt holds camp at IEHE

■ Staff Reporter

IN A CONCERTED effort to prioritise health and well-being among students, the State Health Department organised a health consultation and awareness camp at the Institute for Excellence in Higher Education (IEHE), Bhopal, on Thursday. A total of 650 students and 60 academic staff underwent health examinations during the camp.

According to the reports, the camp offered more than just medical examinations. It was a platform to raise awareness about various health issues. Sessions were conducted to educate participants about tuberculosis, malaria, leprosy,

HIV, cleanliness, nutritious diet, and anaemia prevention. Anaemia screenings were conducted, and ARBHA (Ayushman Bharat Health Account) IDs and Ayushman cards were also issued during the camp. In collaboration with Aarambh Foundation, mobile eye check-ups were provided, and free glasses were distributed to those with low vision. According to the Chief Medical and Health Officer, the camp was held under the flagship programme, "My Health, My Right", emphasising the importance of health for students and both teaching and non-teaching staff. The primary objective of the camp was not only to provide medical check-ups



but also to raise awareness about available health services and programmes among the students.

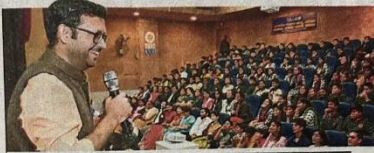
Reportedly, the event saw the active participation and support of Dr Pragvesh Kumar Agarwal, Director of Excellence College, Chandrakanta Maurya, Co-ordinator of the Arogyam Samiti, along with Dr Ruchira Choudhary, Dr Durgesh Kumar, Anamika Kujur, and Dr Prachi Chaturvedi. Their contributions ensured the success of the camp and its mission to promote health and well-being among the students and staff.

IEHE students undergoing check-up in health awareness camp organised by the Health Department on Thursday.

## हमें एआई के माध्यम से अपनी संस्कृति को समझना और काम करना होगा : डॉ. बसु

नेशनल साइंस डे पर कार्यक्रम, शामिल हुए 500 स्टूडेंट्स

सिटी रिपोर्टर। नेशनल साइंस डे पर साइंस सेंटर और स्कूल-कॉलेजों में 'इंजिनेयर्स टेक्नोलॉजी फॉर विकसित भारत' थीम पर सेसन के साथ कई एक्टिविटी हुईं। इंस्टीट्यूट ऑफ एक्सीलेंस इन हायर एजुकेशन के कैम्पस डिपार्टमेंट ने लोबल वुमन बेकफास्ट (जीडब्ल्यूबी) की थीम 'केटलडसिंग डायवर्सिटी इन साइंस' विषय पर हाइब्रिड मोड (ऑनलाइन-ऑफलाइन) में कार्यक्रम का आयोजन किया। जीडब्ल्यूबी की संस्थापक प्रोफेसर मैरी गार्सन ऑस्ट्रेलिया से सम्मिलित हुईं। सोर्सऑर्गेन एम्पी की वाटरप्रू वेबिनार डॉ. सौराव वर्मा ने भी इस दौरान अपने विचार रखे।



### विकसित भारत के लिए स्वदेशी प्रौद्योगिकी

रीजनल साइंस सेंटर में चल रहे साइंस वोक के आखिरी दिन बुधवार को सर सीवी रमन पर व्याख्यान हुआ। इसमें आइसटी प्रोफेसर डॉ. तमस्य बसु ने 'विकसित भारत के लिए स्वदेशी प्रौद्योगिकी' विषय पर बात की। कहा- विकसित भारत केवल कहने से नहीं, बल्कि अपनाने से होगा। हमें एआई के माध्यम से अपनी संस्कृति को समझना होगा और उस अनुसार काम करना होगा। हमें अपनी टेक्नोलॉजी को भारतीय कल्चर के अनुसार तैयार करना होगा, तभी स्वदेशी प्रौद्योगिकी के साथ भारत विकसित होगा।

## एक्सीलेंस कॉलेज में नेशनल वर्कशॉप नई शिक्षा नीति -2020; एक देश-एक विद्यार्थी जैसे विषयों की दी जानकारी



सिटी रिपोर्टर

इंस्टीट्यूट ऑफ एक्सीलेंस इन हायर एजुकेशन (एक्सीलेंस कॉलेज) में नेशनल वर्कशॉप के अंतिम दिन में चल रहा है। पहले सत्र में एनआईटीएच भोपाल को एमएसएमई प्रोफेसर डॉ. ए. राजेश ने विद्यार्थियों की मार्गदर्शक, योग्यता और अवसरता को केंद्र में रखकर मुख्य पराक्रमों के निष्पत्ति के बारे में विचारों को विस्तार से समझाया। इसके अलावा शिक्षा प्रौद्योगिकी भी-करीबी भी, नई शिक्षा नीति-2020; एक देश-एक विद्यार्थी

का संचालन स्वयं काफ़ी करी।



### यह रहे विजेता

फ्लॉवर डेकोरेशन में पहले स्थान पर अर्पिता होलदर और दूसरे स्थान पर प्रियांशी राठौड़ रहीं। फेस पेंटिंग में शिवम नामदेव ने पहला और अर्पिता होलदर ने दूसरा स्थान पाया। मार्क मेकिंग कॉम्पिटिशन में नैन्सी मिश्रा पहले और आदित्य कृष्णदेव बर्मन दूसरे स्थान पर रहे। रंगोली प्रतियोगिता में संजना गुप्ता और दिव्यांशी चंदेवा विजेता बनीं। भारतीय शैली में बनी मेहंदी में मधु पटेल और श्रेया पांडेय विनर रहीं। वहीं अरबी शैली में खुशबू प्रजापति और इफशा खान विजेता रहे।

### तरंग में आज

एक्सीलेंस कॉलेज में 8 फरवरी को चार अलग-अलग कॉम्पिटिशन आयोजित किए जाएंगे। इसकी शुरुआत पोपट्री कॉम्पिटिशन से होगी। प्रतियोगिता में स्टूडेंट्स नाटक के माध्यम से अपनी प्रतिभा दिखाएंगी। आखिरी में माइम और सोलो डांस में अपने टैलेंट को शोकेस करेंगे।













***Office Address –***

***Institute for Excellence in Higher Education (IEHE), Bhopal***

***Near Kaliasot Dam, Kolar Road, Post Box No. 588,***

***Ravishnagar Nagar, Post Office, Bhopal-16***

***Phone: (0755) 2492433, 2492460, 2492492***

***E-mail: [iehebhupal@mp.gov.in](mailto:iehebhupal@mp.gov.in), website: [www.iehe.ac.in](http://www.iehe.ac.in)***

